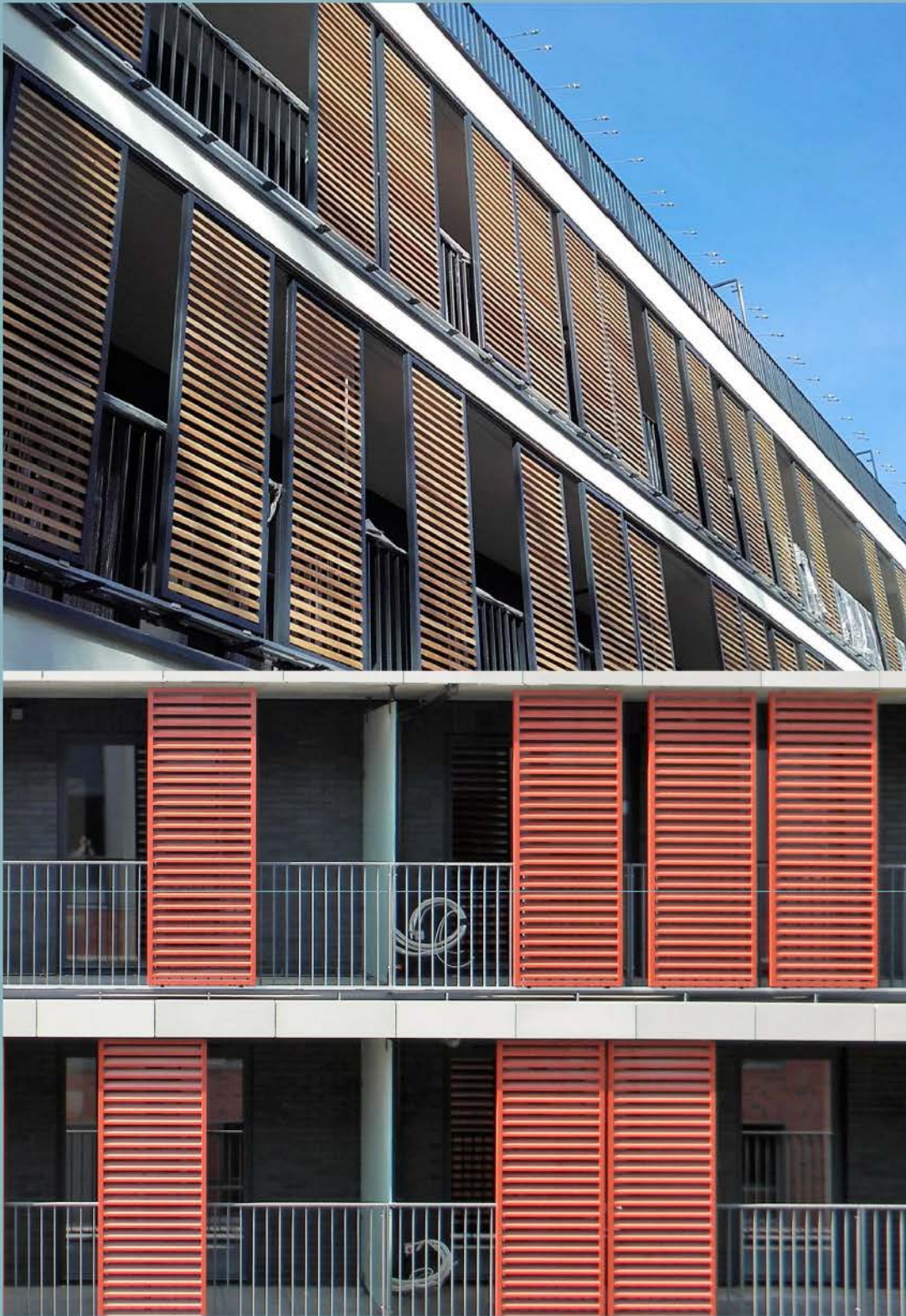
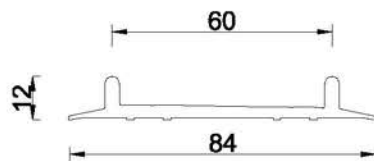
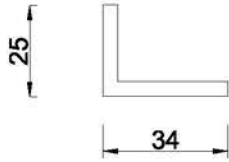


Sliding Panels

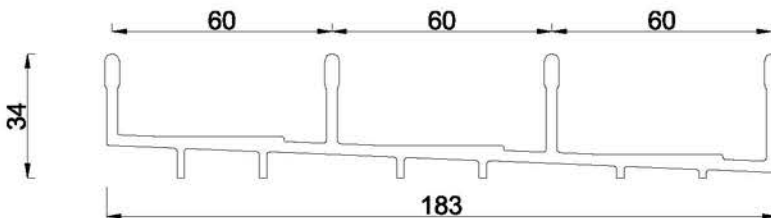
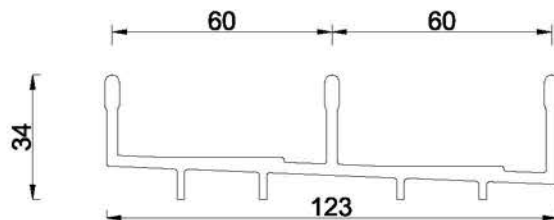


BOTTOM SLIDING RAIL SYSTEM

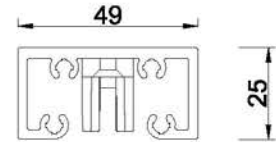
Bottom rails



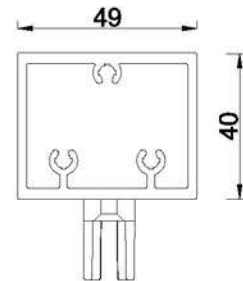
Bottom to flat surfaces



Running system hidden in profile



Running system attached to the profile



PRODUCT DATA SHEET FOR BOTTOM SLIDING RAIL SYSTEM

Profile pressed from aluminium alloy: grade 6060 or 6030 Condition T66 or T6

In accordance with PN-EN 755-9

Tolerance U.N.E. PN-EN 12020-2

Mechanical properties according to PN-EN 755-2

Chemical composition in accordance with the PN-EN 573-3 standard

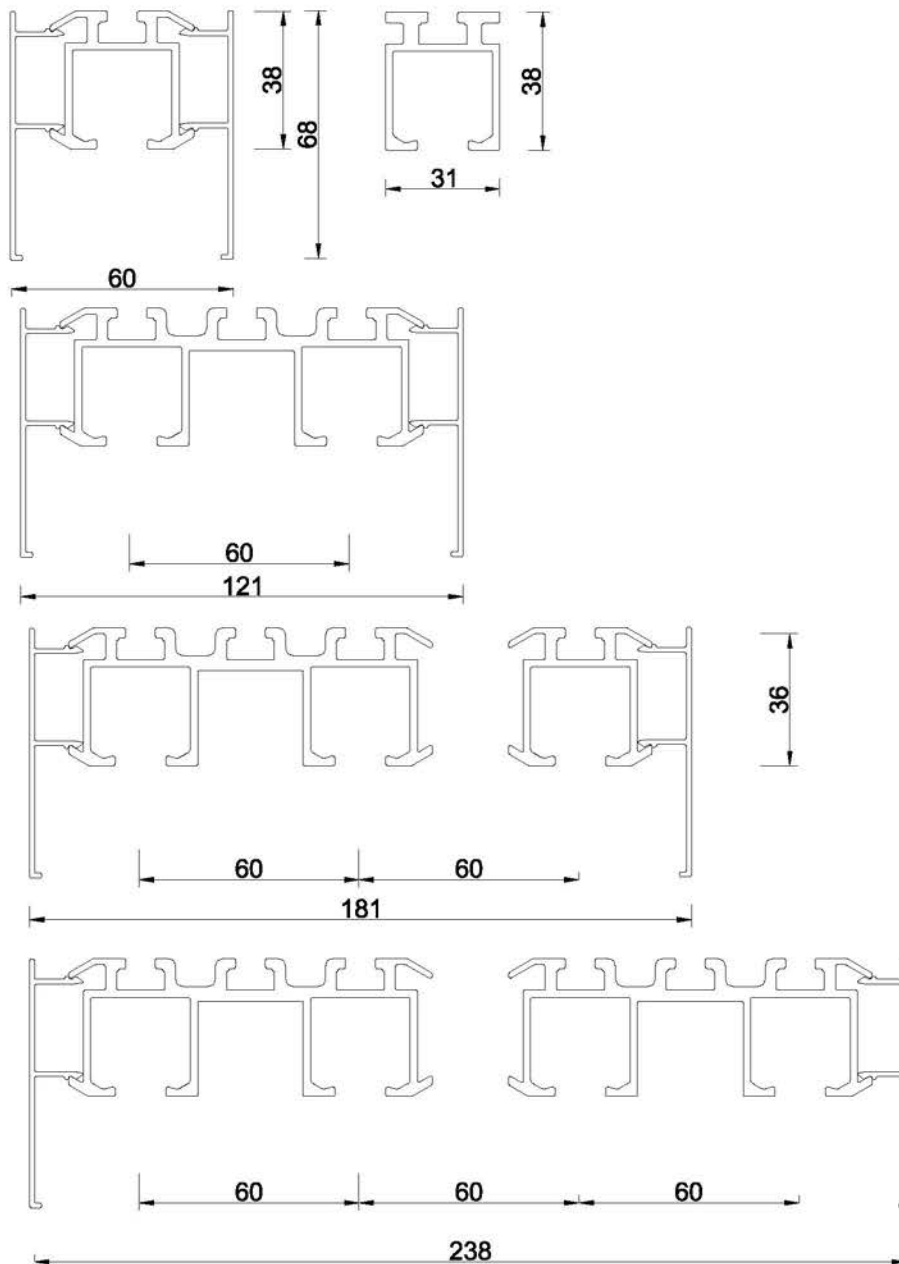
Surface quality: Polyester powder coating in all RAL colours 60-80 µm, wood effect, Anodising 15-20 µm, mill finish

BOTTOM BUSES RECOMMENDED ADDED

Any components available in commercial quantities and lengths.

MODIFICATION DATE
01.2018

Rail running system



PRODUCT DATA SHEET FOR RAIL RUNNING SYSTEM

Profile pressed from aluminium alloy: grade 6060 or 6030 Condition T66 or T6

In accordance with PN-EN 755-9

Tolerance U.N.E. PN-EN 12020-2

Mechanical properties according to PN-EN 755-2

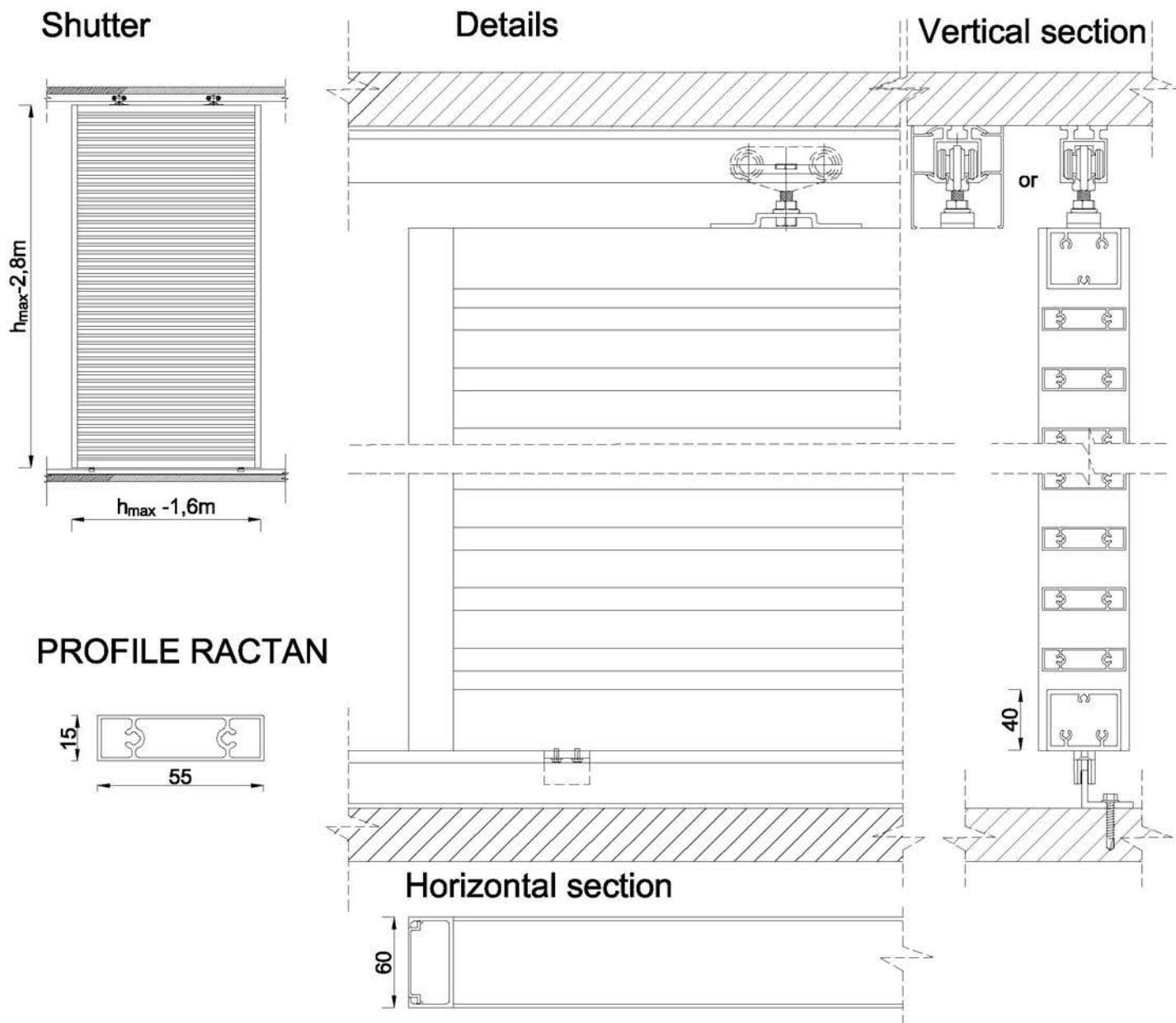
Chemical composition in accordance with the PN-EN 573-3 standard

Surface quality: Polyester powder coating in all RAL colours 60-80 µm, wood effect, Anodising 15-20 µm, mill finish

Any components available in commercial quantities and lengths.

MODIFICATION DATE
01.2018

SHUTTERS TYPE RACTAN



PRODUCT DATA SHEET FOR SHUTTERS TYPE RACTAN

Profile pressed from aluminium alloy: grade 6060 or 6030 Condition T66 or T6

In accordance with PN-EN 755-9

Tolerance U.N.E. PN-EN 12020-2

Mechanical properties according to PN-EN 755-2

Chemical composition in accordance with the PN-EN 573-3 standard

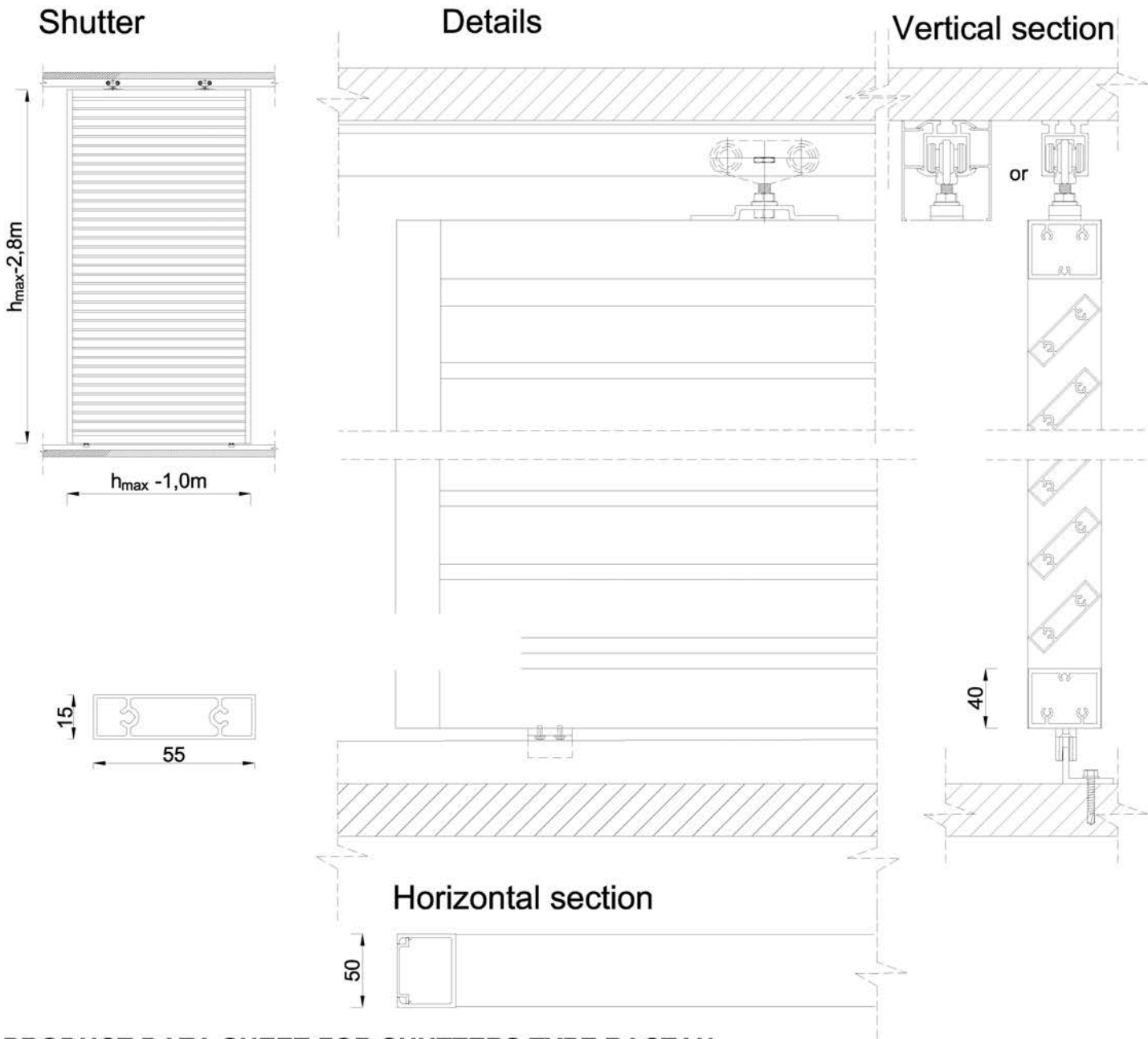
Surface quality: Polyester powder coating in all RAL colours 60-80 μm , wood effect, Anodising 15-20 μm , mill finish

Any components available in commercial quantities and lengths.

Other sizes of shutters on request

MODIFICATION DATE
01.2018

SHUTTERS TYPE RACTAN



PRODUCT DATA SHEET FOR SHUTTERS TYPE RACTAN

Profile pressed from aluminium alloy: grade 6060 or 6030 Condition T66 or T6

In accordance with PN-EN 755-9

Tolerance U.N.E. PN-EN 12020-2

Mechanical properties according to PN-EN 755-2

Chemical composition in accordance with the PN-EN 573-3 standard

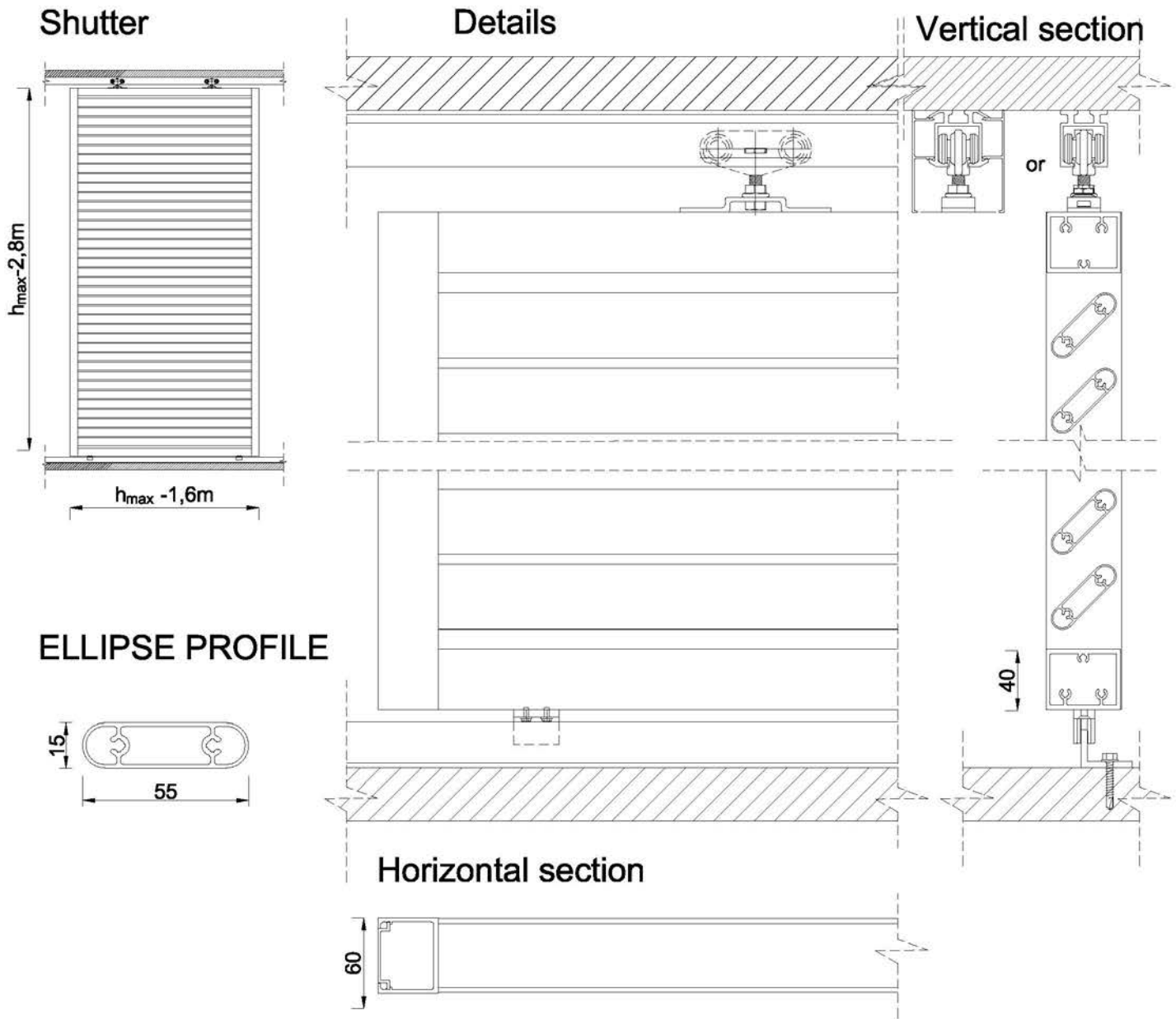
Surface quality: Polyester powder coating in all RAL colours 60-80 μm , wood effect, Anodising 15-20 μm , mill finish

Any components available in commercial quantities and lengths.

Other sizes of shutters on request

MODIFICATION DATE
01.2018

SHUTTERS TYPE ELLIPSE



PRODUCT DATA SHEET FOR SHUTTERS TYPE ELLIPSE

Profile pressed from aluminium alloy: grade 6060 or 6030 Condition T66 or T6

In accordance with PN-EN 755-9

Tolerance U.N.E. PN-EN 12020-2

Mechanical properties according to PN-EN 755-2

Chemical composition in accordance with the PN-EN 573-3 standard

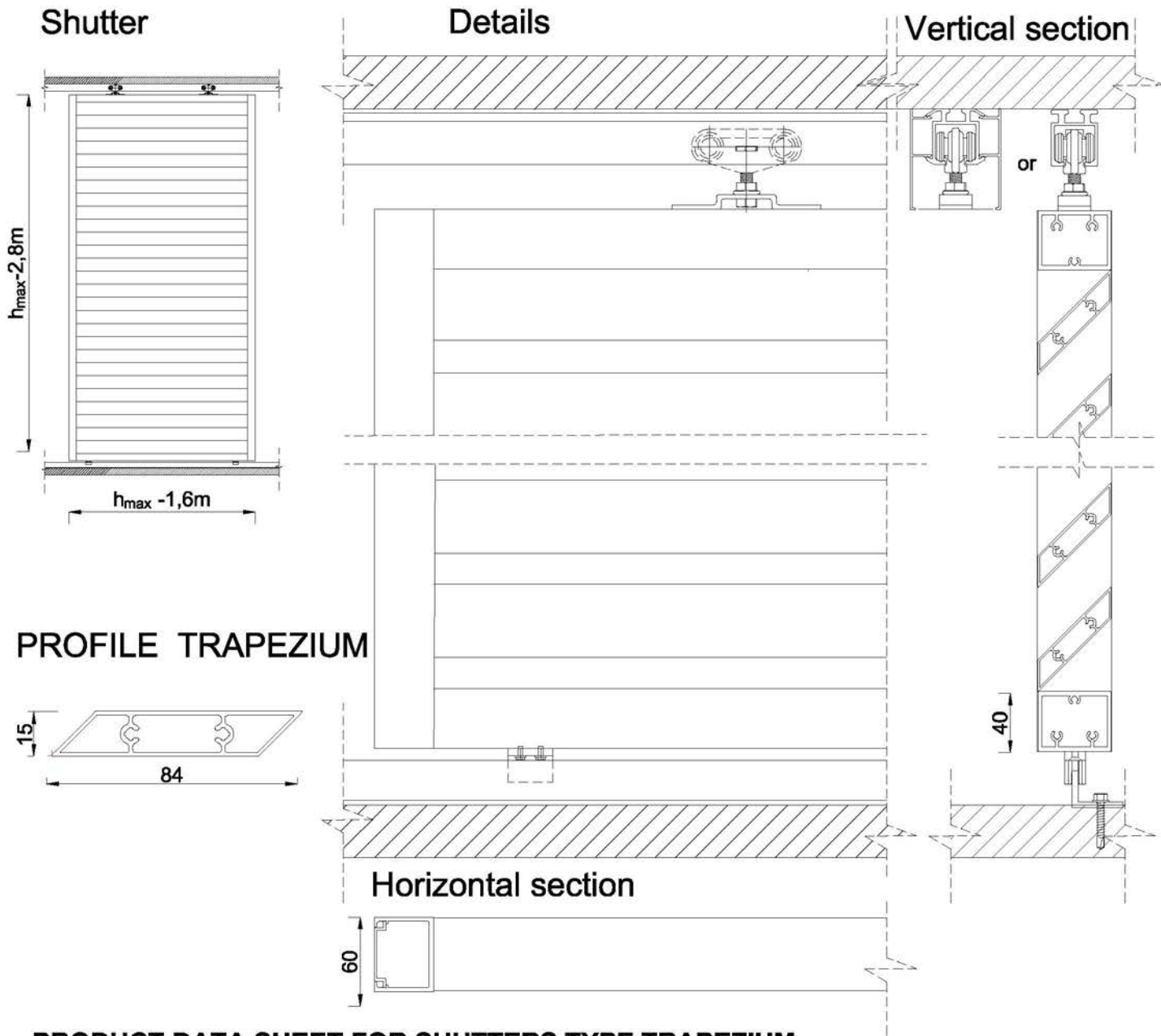
Surface quality: Polyester powder coating in all RAL colours 60-80 μm , wood effect, Anodising 15-20 μm , mill finish

Any components available in commercial quantities and lengths.

Other sizes of shutters on request

MODIFICATION DATE
03.2018

SHUTTERS TYPE TRAPEZIUM



PRODUCT DATA SHEET FOR SHUTTERS TYPE TRAPEZIUM

Profile pressed from aluminium alloy: grade 6060 or 6030 Condition T66 or T6

In accordance with PN-EN 755-9

Tolerance U.N.E. PN-EN 12020-2

Mechanical properties according to PN-EN 755-2

Chemical composition in accordance with the PN-EN 573-3 standard

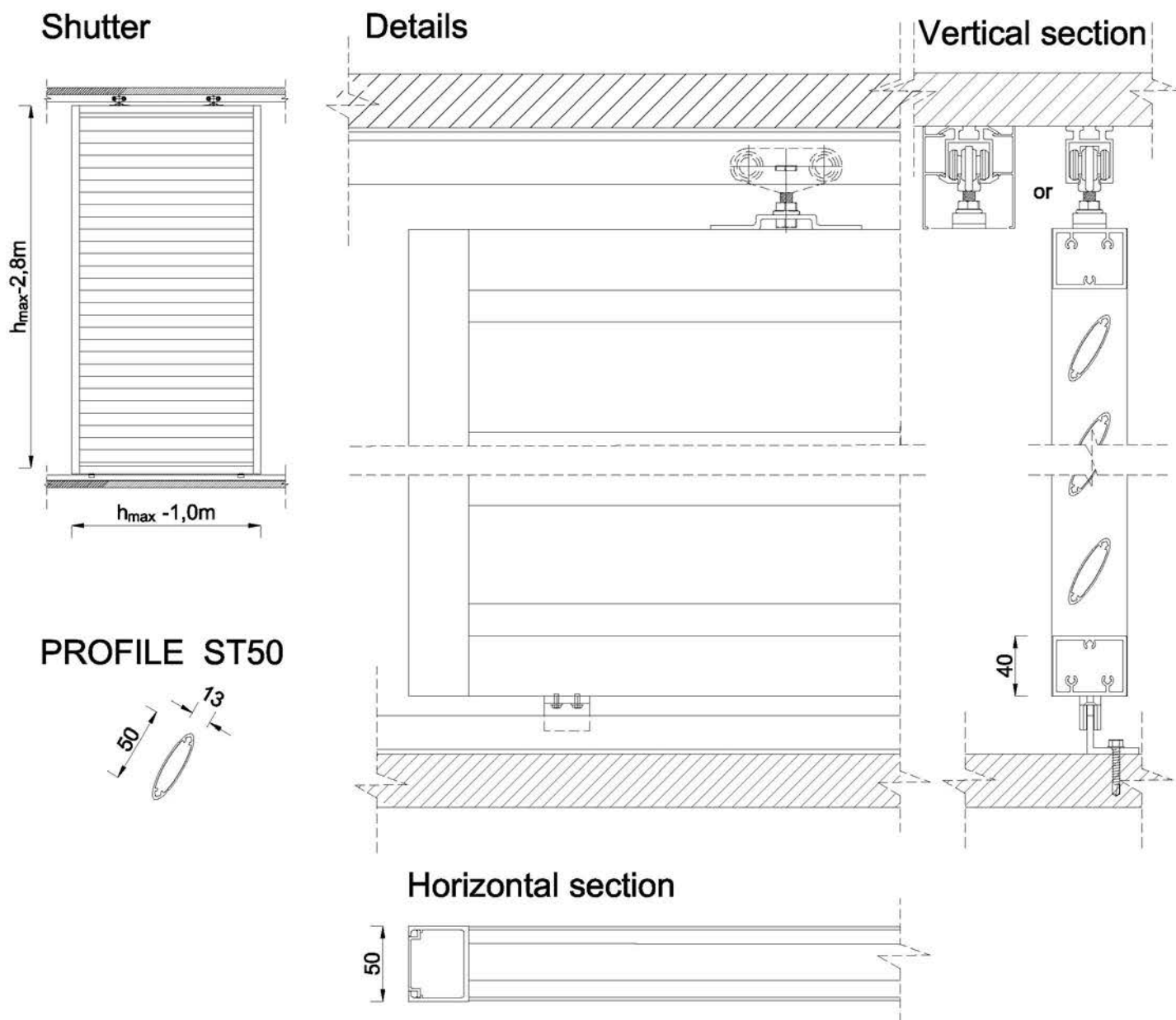
Surface quality: Polyester powder coating in all RAL colours 60-80 μm , wood effect, Anodising 15-20 μm , mill finish

Any components available in commercial quantities and lengths.

Other sizes of shutters on request

MODIFICATION DATE
03.2018

SHUTTERS TYPE ST50



PRODUCT DATA SHEET FOR SHUTTERS TYPE ST50

Profile pressed from aluminium alloy: grade 6060 or 6030 Condition T66 or T6

In accordance with PN-EN 755-9

Tolerance U.N.E. PN-EN 12020-2

Mechanical properties according to PN-EN 755-2

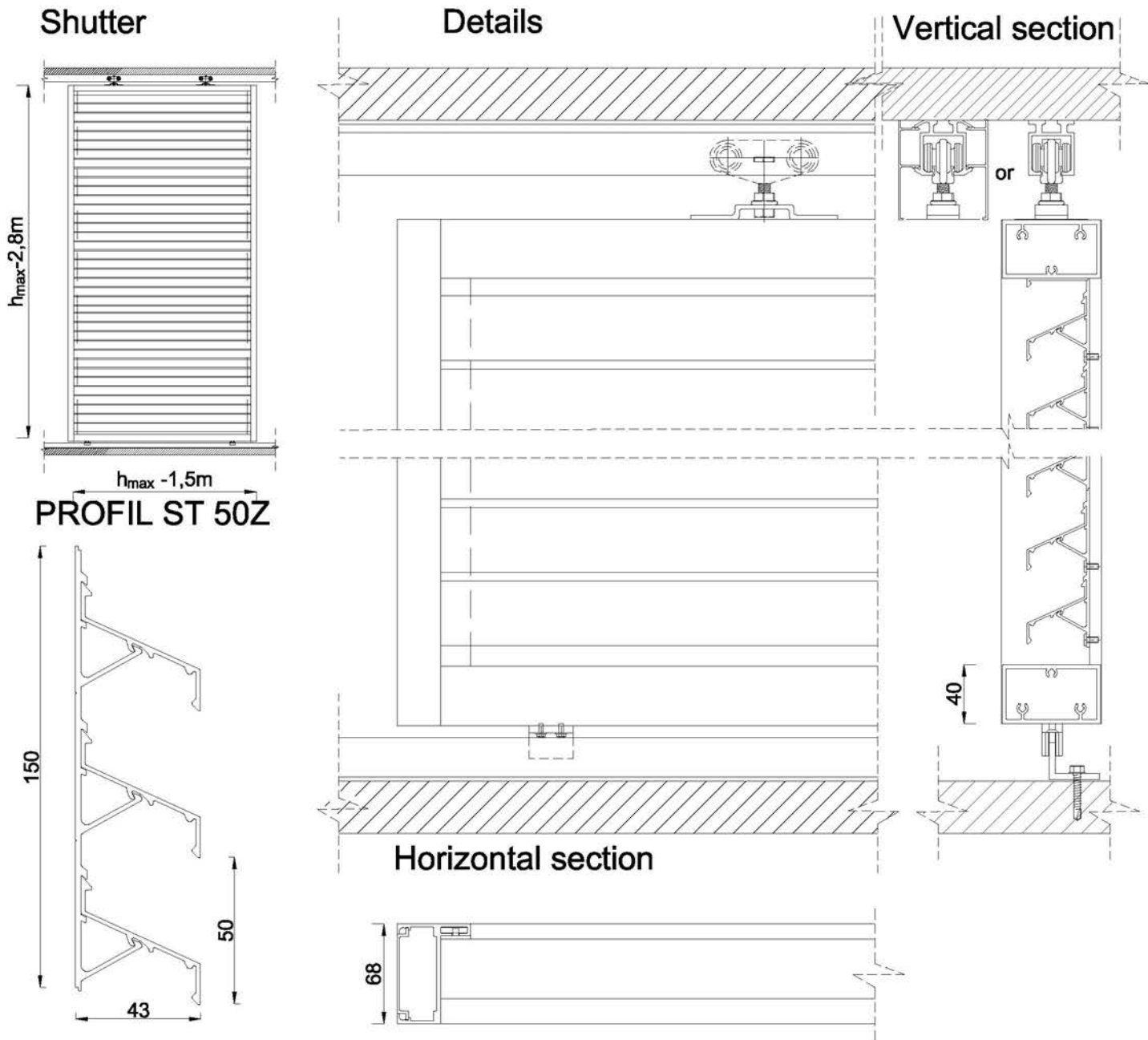
Chemical composition in accordance with the PN-EN 573-3 standard

Surface quality: Polyester powder coating in all RAL colours 60-80 μm , wood effect, Anodising 15-20 μm , mill finish

Any components available in commercial quantities and lengths.

Other sizes of shutters on request

SHUTTERS TYPE ST 50Z



PRODUCT DATA SHEET FOR SHUTTERS TYPE ST50Z

Profile pressed from aluminium alloy: grade 6060 or 6030 Condition T66 or T6

In accordance with PN-EN 755-9

Tolerance U.N.E. PN-EN 12020-2

Mechanical properties according to PN-EN 755-2

Chemical composition in accordance with the PN-EN 573-3 standard

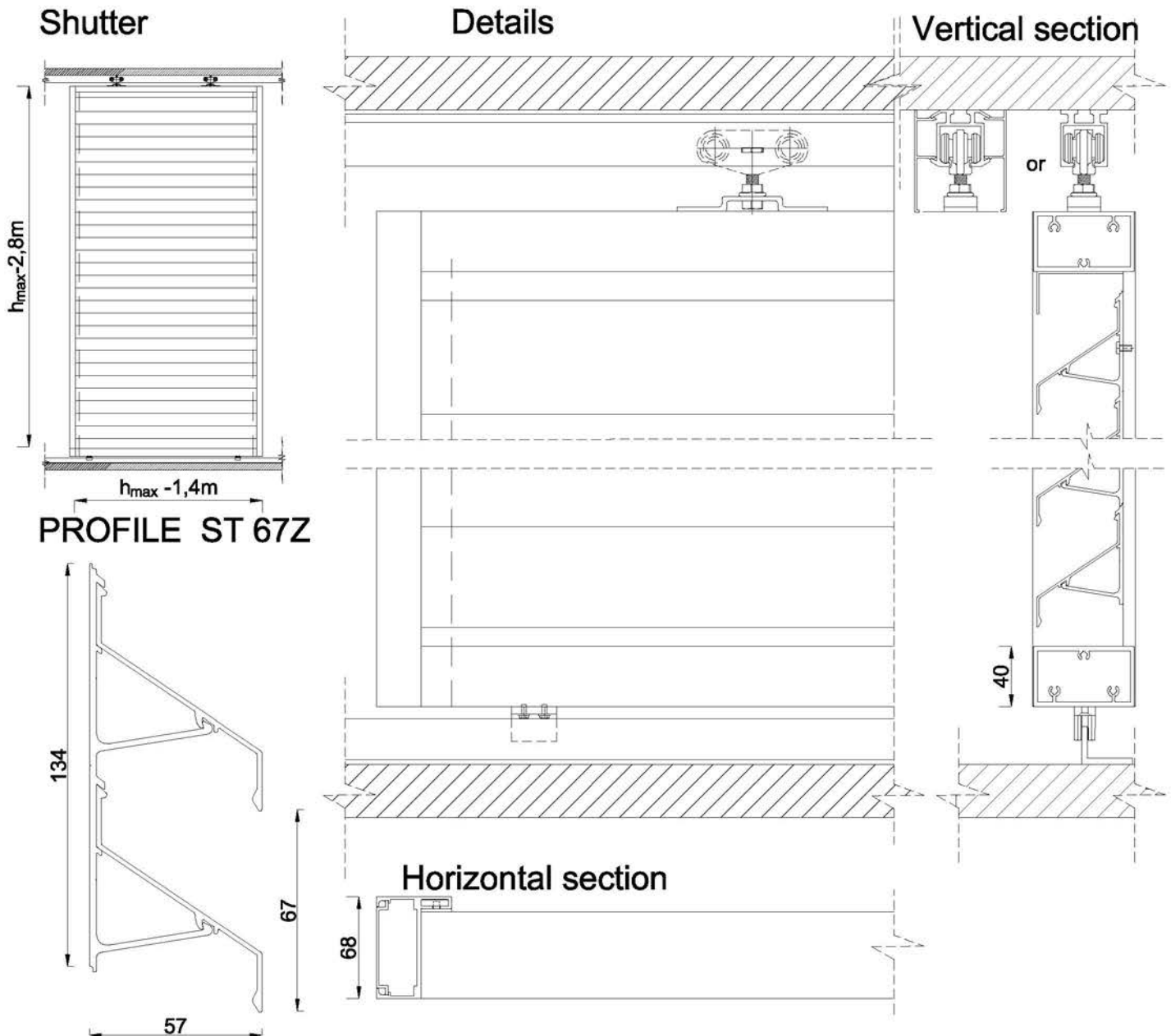
Surface quality: Polyester powder coating in all RAL colours 60-80 μm , wood effect, Anodising 15-20 μm , mill finish

Any components available in commercial quantities and lengths.

Other sizes of shutters on request

MODIFICATION DATE
01.2018

SHUTTERS TYPE ST 67Z



PRODUCT DATA SHEET FOR SHUTTERS TYPE ST 67Z

Profile pressed from aluminium alloy: grade 6060 or 6030 Condition T66 or T6

In accordance with PN-EN 755-9

Tolerance U.N.E. PN-EN 12020-2

Mechanical properties according to PN-EN 755-2

Chemical composition in accordance with the PN-EN 573-3 standard

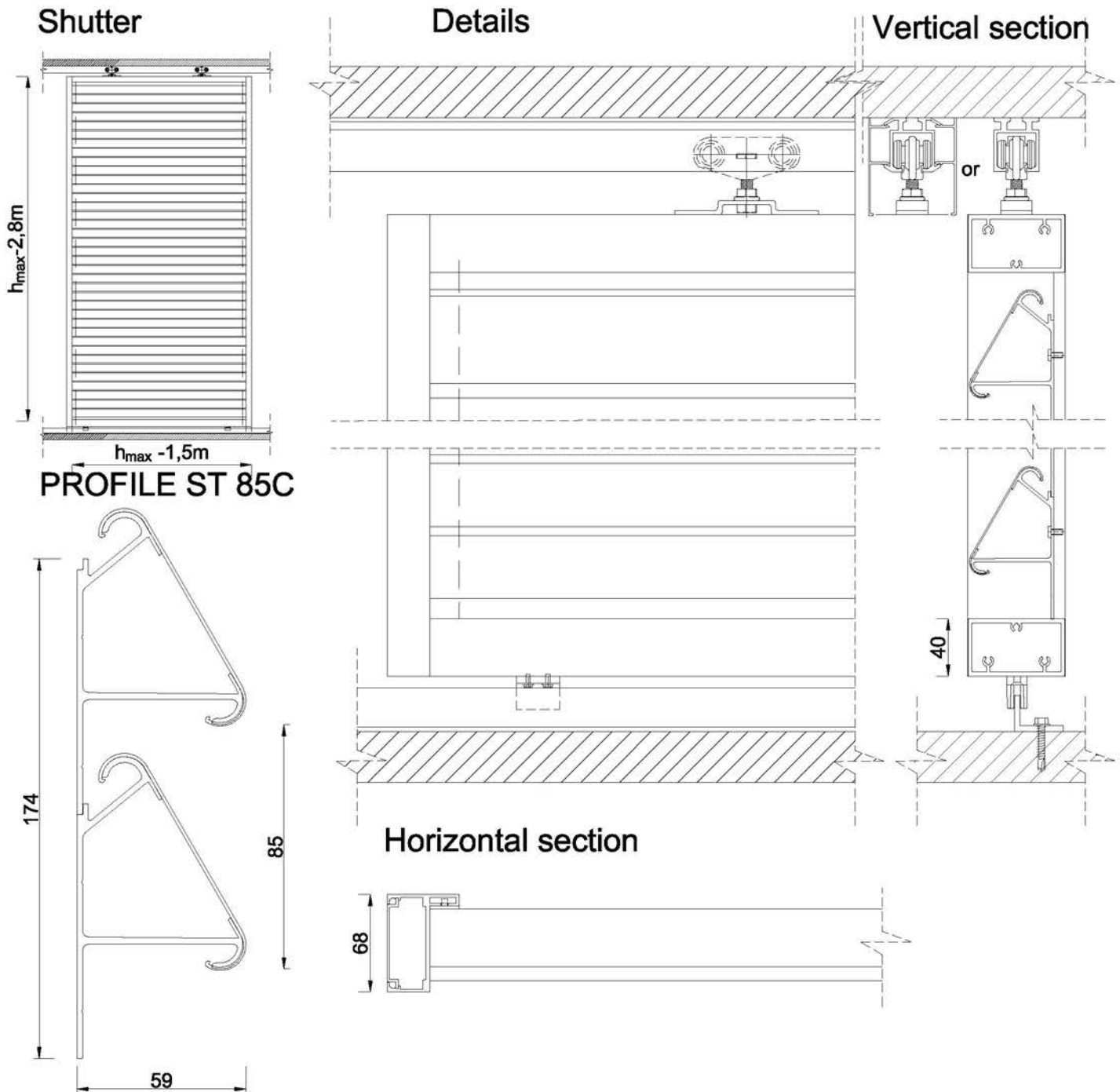
Surface quality: Polyester powder coating in all RAL colours 60-80 μm , wood effect, Anodising 15-20 μm , mill finish

Any components available in commercial quantities and lengths.

Other sizes of shutters on request

MODIFICATION DATE
01.2018

SHUTTERS TYPE ST 85C/30



PRODUCT DATA SHEET FOR SHUTTERS TYPE ST 85C

Profile pressed from aluminium alloy: grade 6060 or 6030 Condition T66 or T6

In accordance with PN-EN 755-9

Tolerance U.N.E. PN-EN 12020-2

Mechanical properties according to PN-EN 755-2

Chemical composition in accordance with the PN-EN 573-3 standard

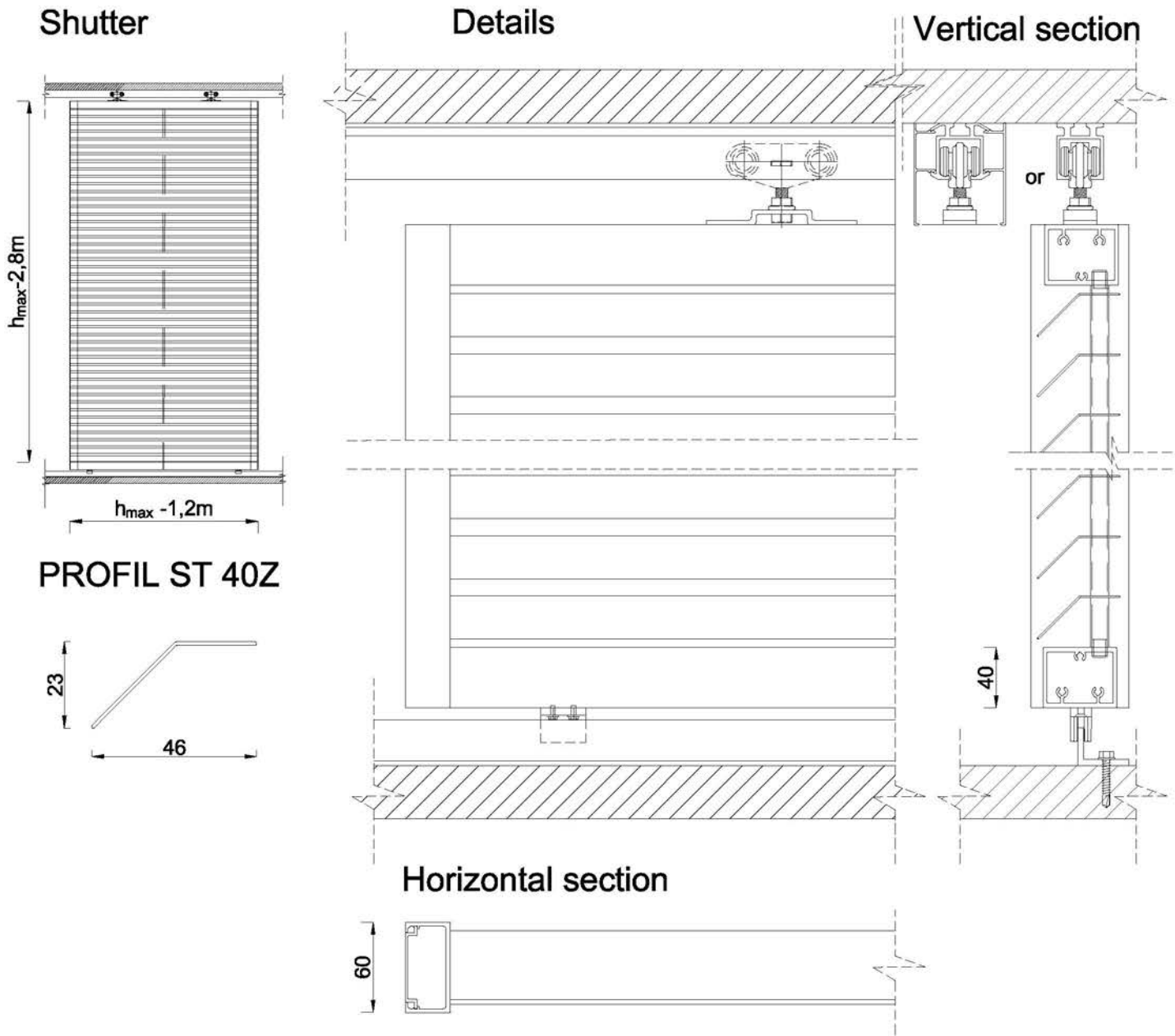
Surface quality: Polyester powder coating in all RAL colours 60-80 μm , wood effect, Anodising 15-20 μm , mill finish

Any components available in commercial quantities and lengths.

Other sizes of shutters on request

MODIFICATION DATE
01.2018

SHUTTERS TYPE ST Z40



PRODUCT DATA SHEET FOR SHUTTERS TYPE ST Z40

Profile pressed from aluminium alloy: grade 6060 or 6030 Condition T66 or T6

In accordance with PN-EN 755-9

Tolerance U.N.E. PN-EN 12020-2

Mechanical properties according to PN-EN 755-2

Chemical composition in accordance with the PN-EN 573-3 standard

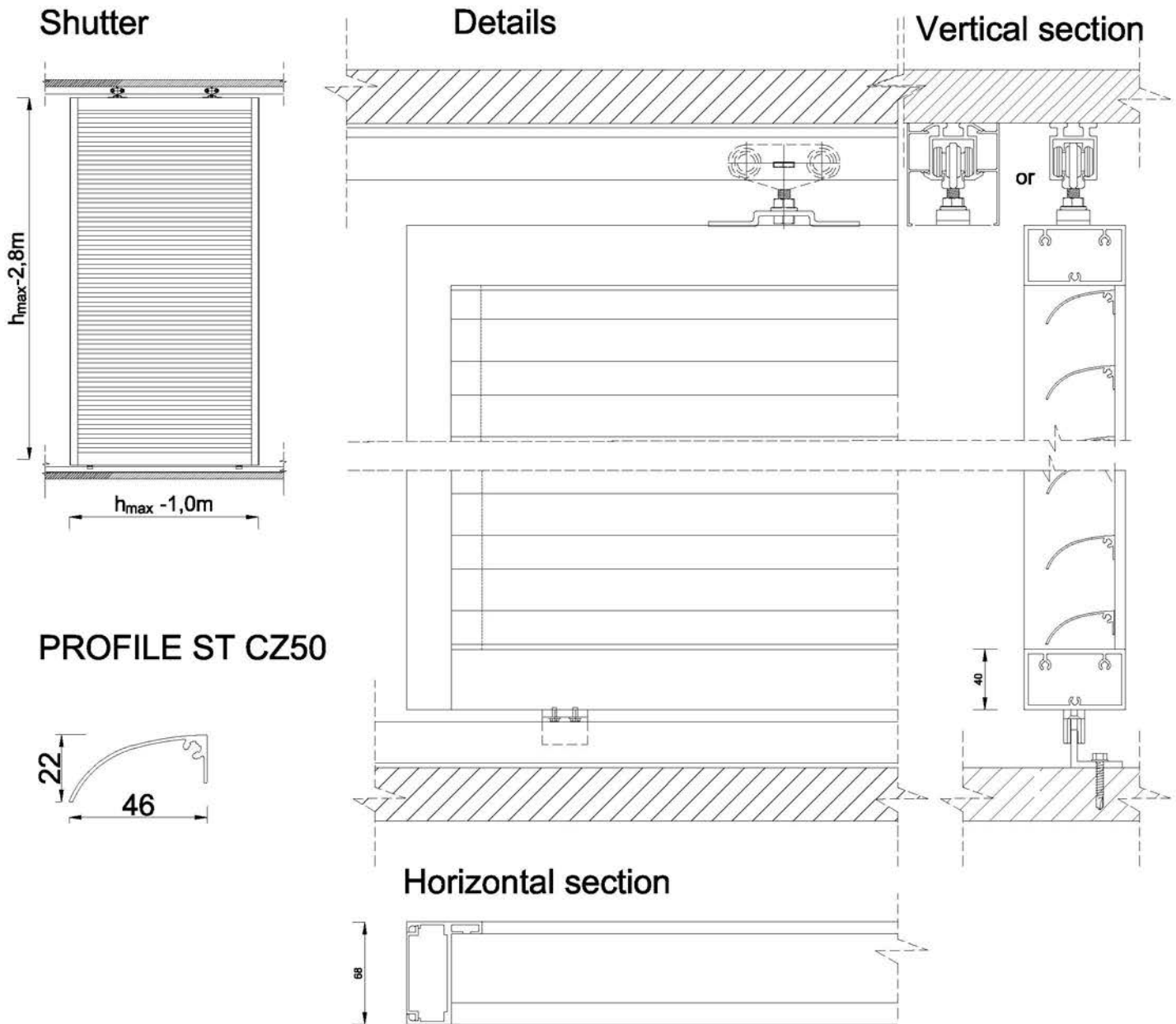
Surface quality: Polyester powder coating in all RAL colours 60-80 μm , wood effect, Anodising 15-20 μm , mill finish

Any components available in commercial quantities and lengths.

Other sizes of shutters on request

MODIFICATION DATE
01.2018

SHUTTERS TYPE ST CZ50



PRODUCT DATA SHEET FOR SHUTTERS TYPE ST CZ50

Profile pressed from aluminium alloy: grade 6060 or 6030 Condition T66 or T6

In accordance with PN-EN 755-9

Tolerance U.N.E. PN-EN 12020-2

Mechanical properties according to PN-EN 755-2

Chemical composition in accordance with the PN-EN 573-3 standard

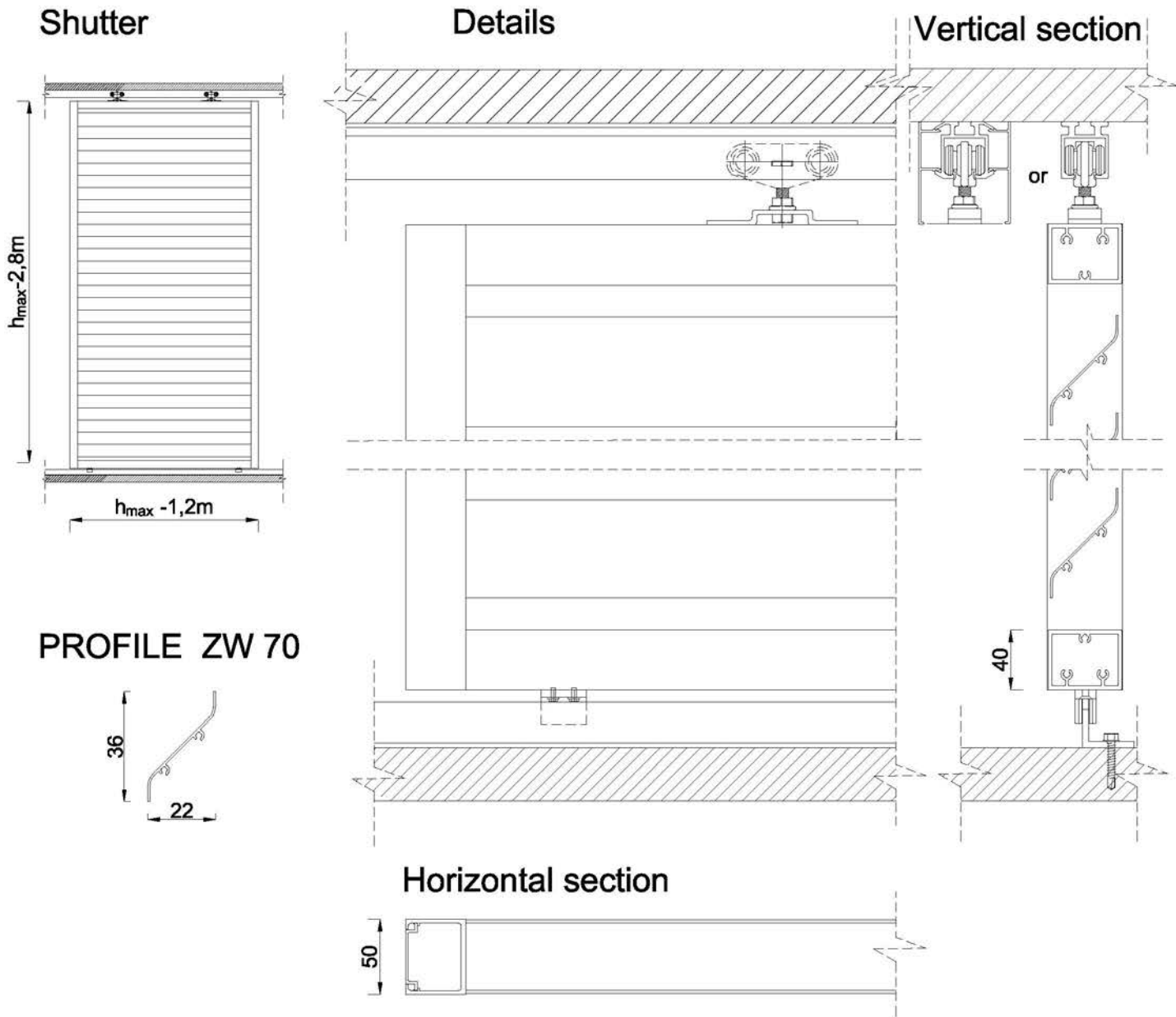
Surface quality: Polyester powder coating in all RAL colours 60-80 μm , wood effect, Anodising 15-20 μm , mill finish

Any components available in commercial quantities and lengths.

Other sizes of shutters on request

MODIFICATION DATE
01.2018

SHUTTERS TYPE ZW 70



PRODUCT DATA SHEET FOR SHUTTERS TYPE ZW70

Profile pressed from aluminium alloy: grade 6060 or 6030 Condition T66 or T6

In accordance with PN-EN 755-9

Tolerance U.N.E. PN-EN 12020-2

Mechanical properties according to PN-EN 755-2

Chemical composition in accordance with the PN-EN 573-3 standard

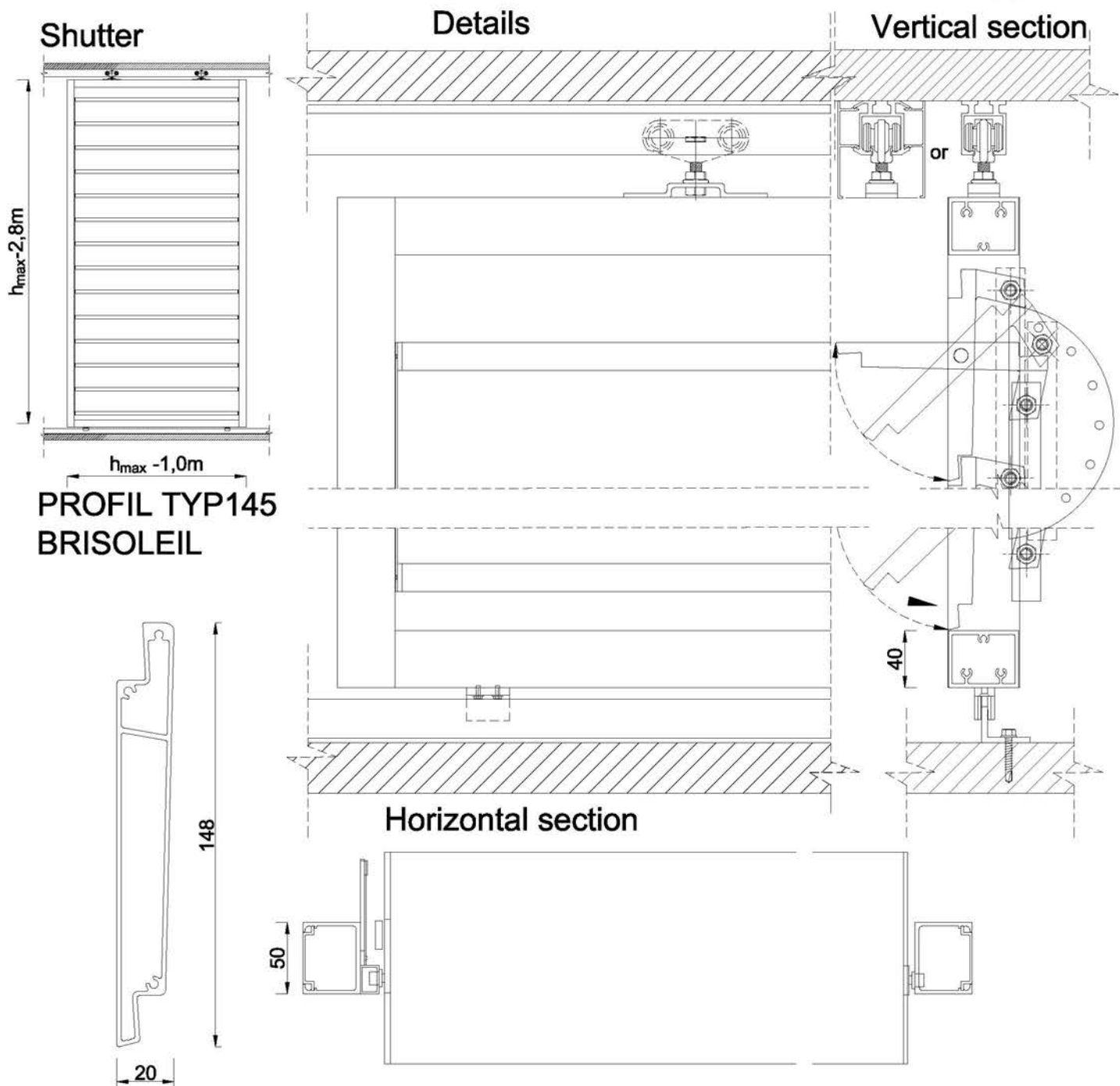
Surface quality: Polyester powder coating in all RAL colours 60-80 μm , wood effect, Anodising 15-20 μm , mill finish

Any components available in commercial quantities and lengths.

Other sizes of shutters on request

MODIFICATION DATE
01.2018

SHUTTERS TYPE 145 BRISOLEIL



PRODUCT DATA SHEET FOR SHUTTERS TYPE 145 BRISOLEIL

Profile pressed from aluminium alloy: grade 6060 or 6030 Condition T66 or T6

In accordance with PN-EN 755-9

Tolerance U.N.E. PN-EN 12020-2

Mechanical properties according to PN-EN 755-2

Chemical composition in accordance with the PN-EN 573-3 standard

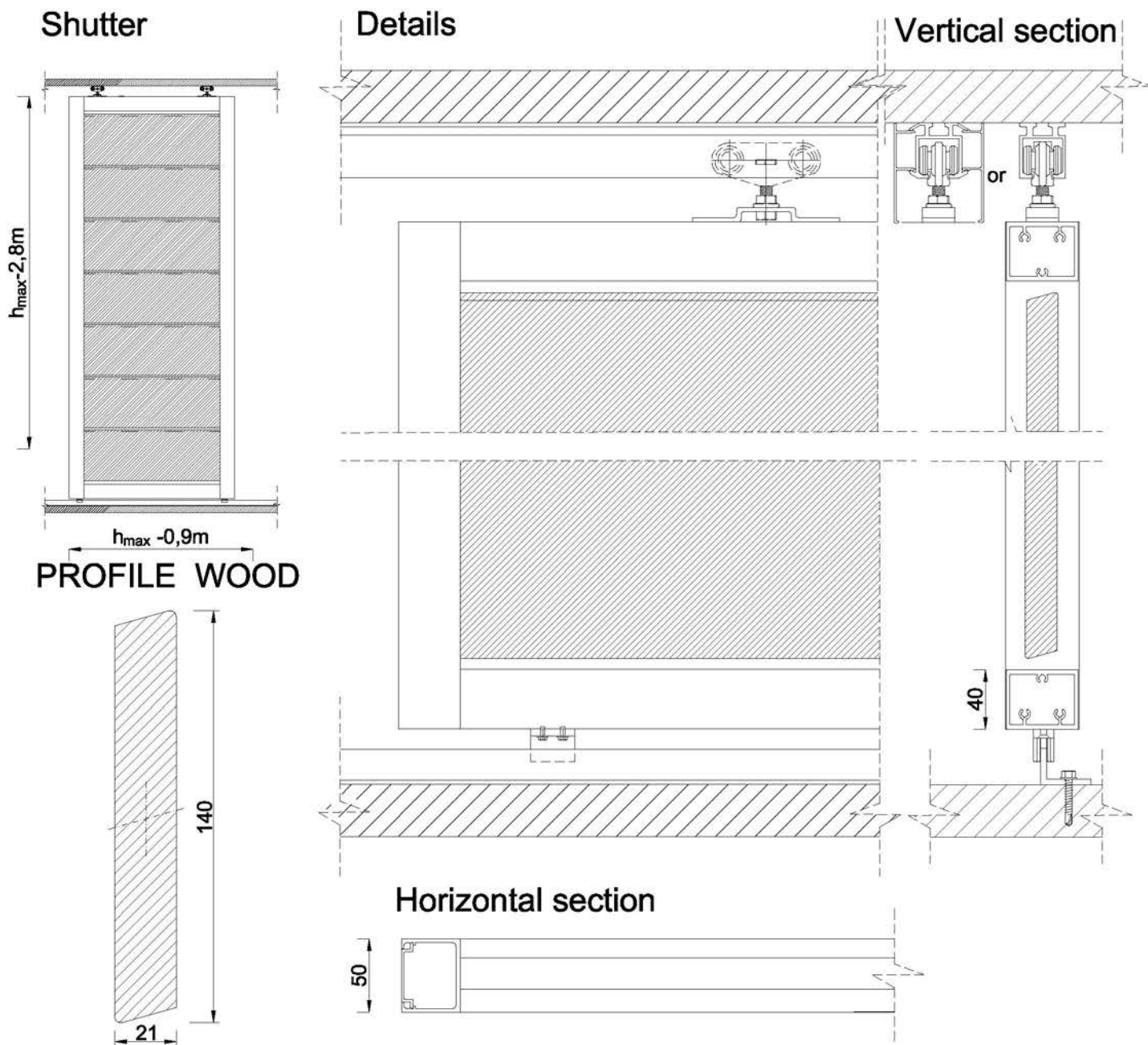
Surface quality: Polyester powder coating in all RAL colours 60-80 μm , wood effect, Anodising 15-20 μm , mill finish

Any components available in commercial quantities and lengths.

Other sizes of shutters on request

MODIFICATION DATE
01.2018

SHUTTERS TYPE 15/140 WOOD (CEDAR)



PRODUCT DATA SHEET FOR SHUTTERS TYPE 15/140 WOOD (CEDAR)

Profile pressed from aluminium alloy: grade 6060 or 6030 Condition T66 or T6

In accordance with PN-EN 755-9

Tolerance U.N.E. PN-EN 12020-2

Mechanical properties according to PN-EN 755-2

Chemical composition in accordance with the PN-EN 573-3 standard

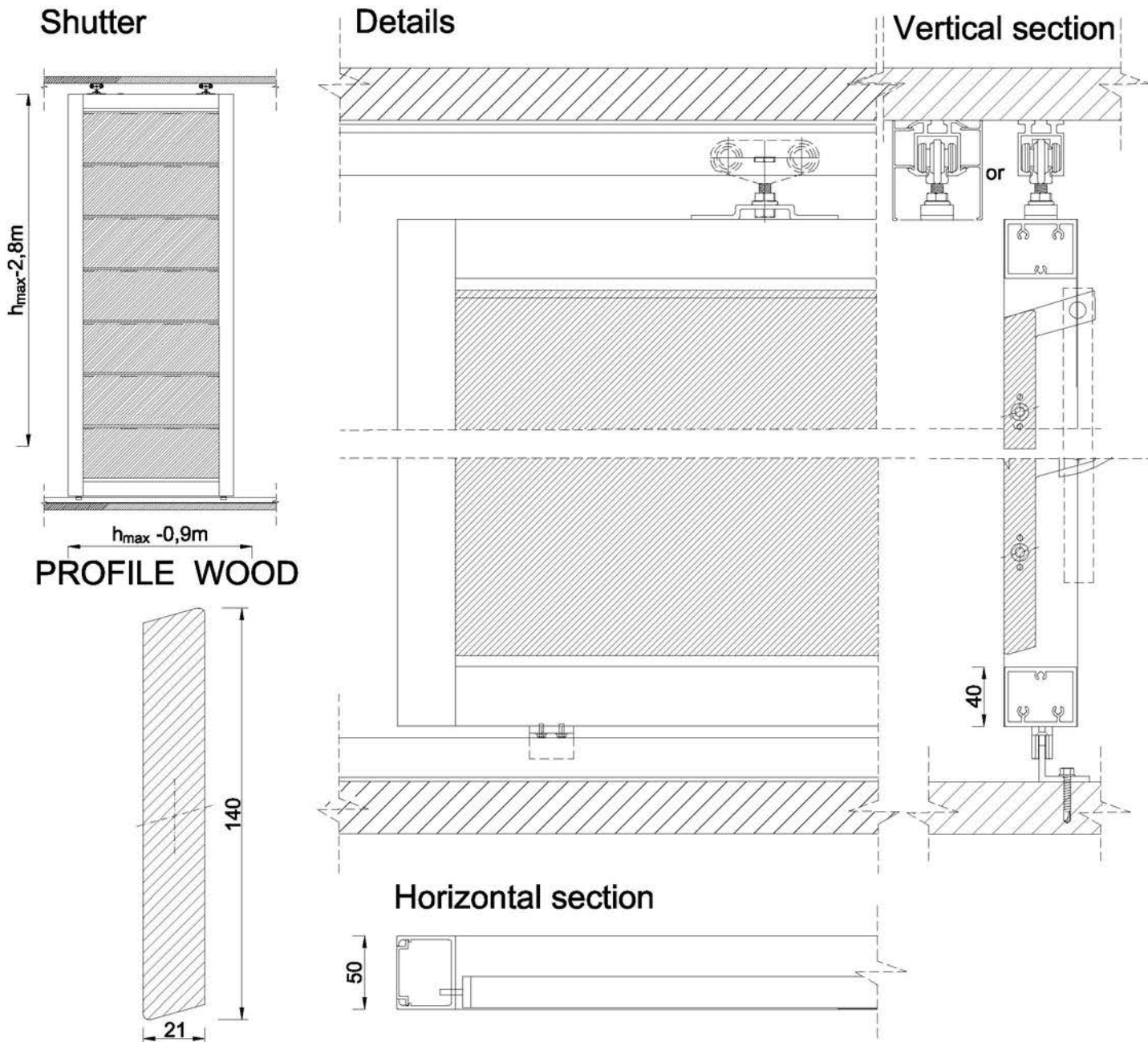
Surface quality: Polyester powder coating in all RAL colours 60-80 µm, wood effect, Anodising 15-20 µm, mill finish

Any components available in commercial quantities and lengths.

Other sizes of shutters on request

MODIFICATION DATE
01.2018

SHUTTERS TYPE 15/140 WOOD (CEDAR)



PRODUCT DATA SHEET FOR SHUTTERS TYPE 15/140 WOOD (CEDAR)

Profile pressed from aluminium alloy: grade 6060 or 6030 Condition T66 or T6

In accordance with PN-EN 755-9

Tolerance U.N.E. PN-EN 12020-2

Mechanical properties according to PN-EN 755-2

Chemical composition in accordance with the PN-EN 573-3 standard

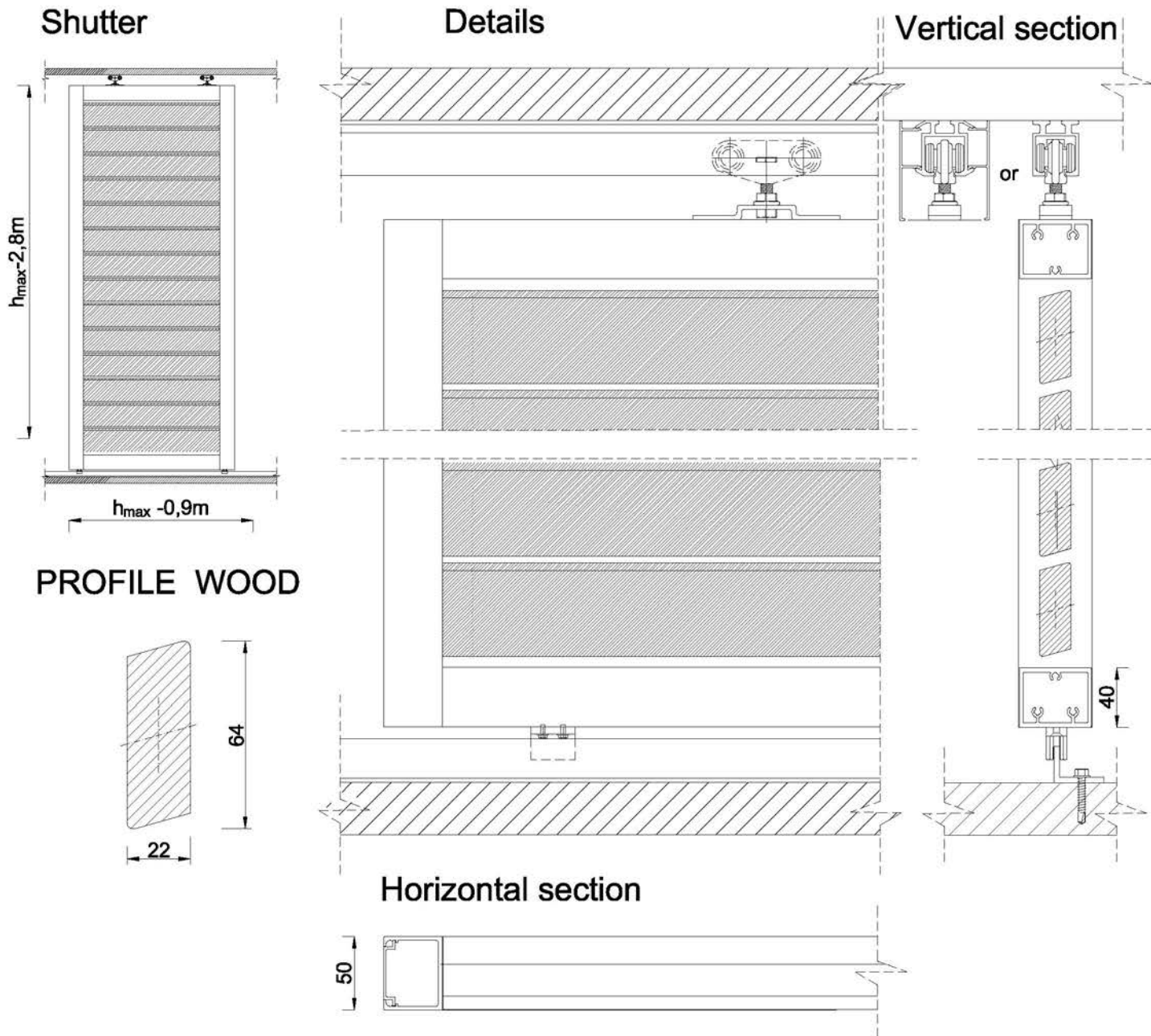
Surface quality: Polyester powder coating in all RAL colours 60-80 µm, wood effect, Anodising 15-20 µm, mill finish

Any components available in commercial quantities and lengths.

Other sizes of shutters on request

MODIFICATION DATE
01.2018

SHUTTERS TYPE 15/65 WOOD (CEDAR, SYBERIAN LARCH)



PRODUCT DATA SHEET FOR SHUTTERS TYPE 15/65 WOOD

Profile pressed from aluminium alloy: grade 6060 or 6030 Condition T66 or T6

In accordance with PN-EN 755-9

Tolerance U.N.E. PN-EN 12020-2

Mechanical properties according to PN-EN 755-2

Chemical composition in accordance with the PN-EN 573-3 standard

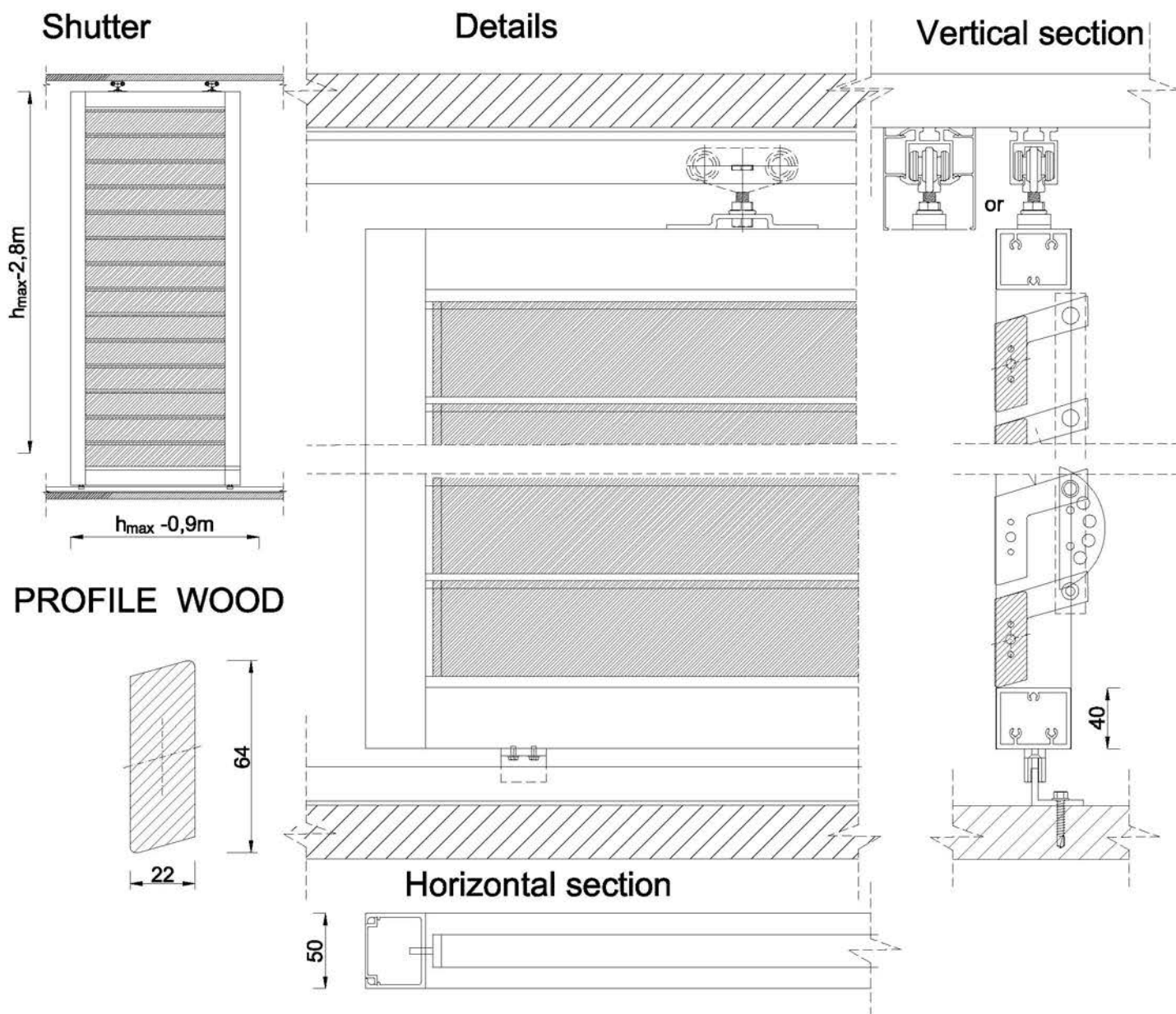
Surface quality: Polyester powder coating in all RAL colours 60-80 μm , wood effect, Anodising 15-20 μm , mill finish

Any components available in commercial quantities and lengths.

Other sizes of shutters on request

MODIFICATION DATE
01.2018

SHUTTERS TYPE WOOD



PRODUCT DATA SHEET FOR SHUTTERS TYPE WOOD

Profile pressed from aluminium alloy: grade 6060 or 6030 Condition T66 or T6

In accordance with PN-EN 755-9

Tolerance U.N.E. PN-EN 12020-2

Mechanical properties according to PN-EN 755-2

Chemical composition in accordance with the PN-EN 573-3 standard

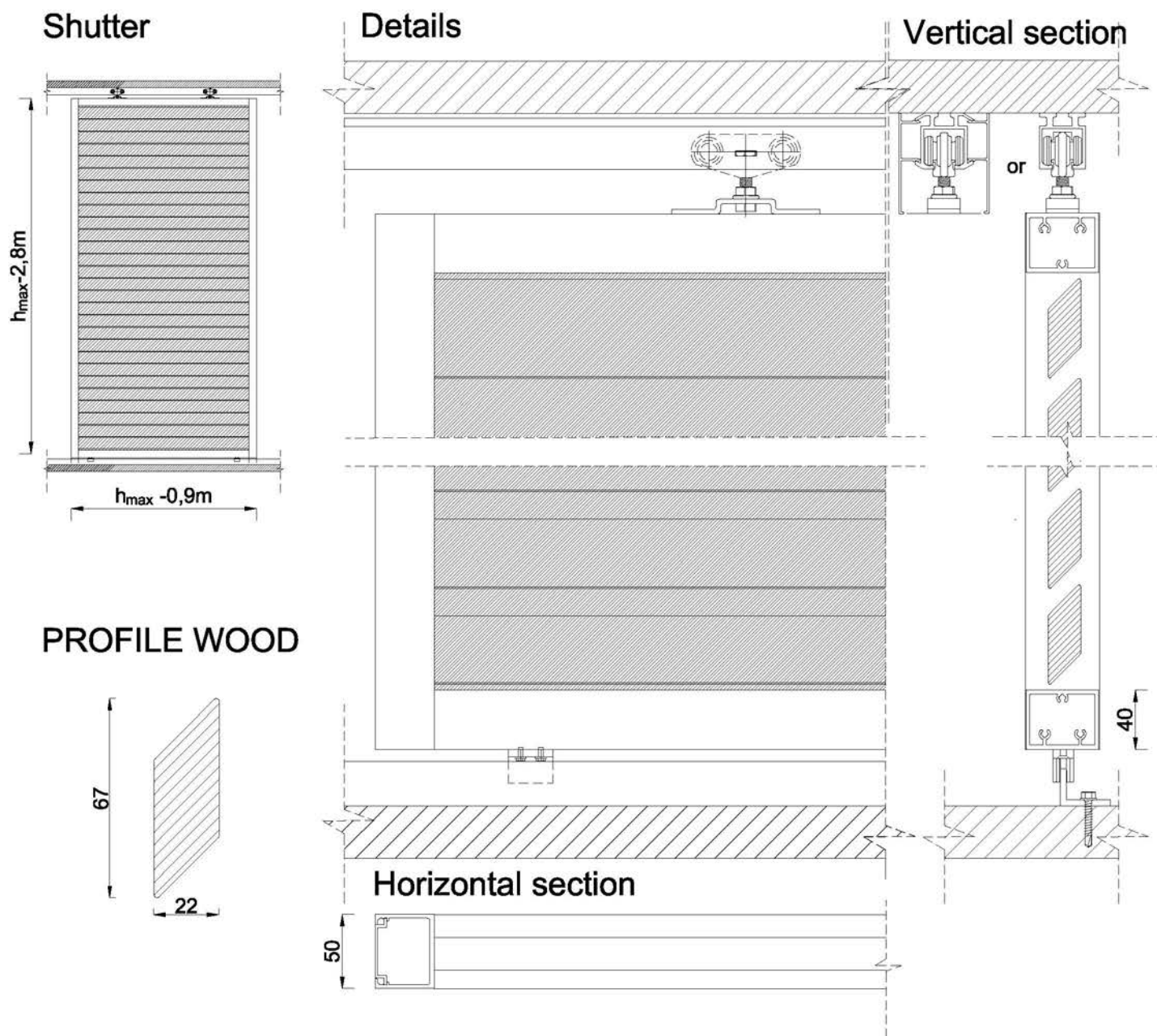
Surface quality: Polyester powder coating in all RAL colours 60-80 μm , wood effect, Anodising 15-20 μm , mill finish

Any components available in commercial quantities and lengths.

Other sizes of shutters on request

MODIFICATION DATE
01.2018

SHUTTERS TYPE 45/0 WOOD (CEDAR, SYBERIAN LARCH)



PRODUCT DATA SHEET FOR SHUTTERS TYPE 45/0 WOOD (CEDAR, SYBERIAN LARCH)

Profile pressed from aluminium alloy: grade 6060 or 6030 Condition T66 or T6

In accordance with PN-EN 755-9

Tolerance U.N.E. PN-EN 12020-2

Mechanical properties according to PN-EN 755-2

Chemical composition in accordance with the PN-EN 573-3 standard

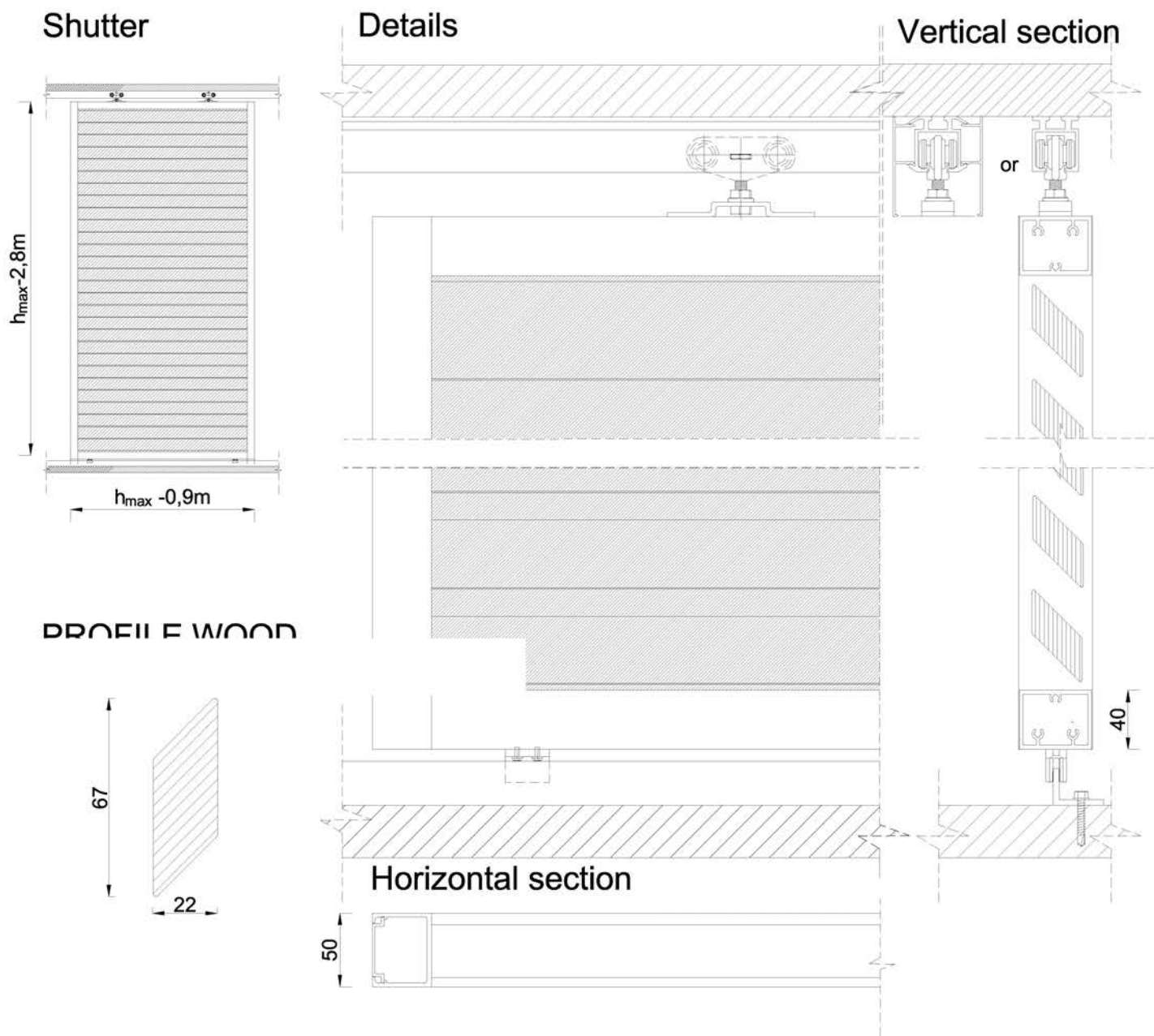
Surface quality: Polyester powder coating in all RAL colours 60-80 μm , wood effect, Anodising 15-20 μm , mill finish

Any components available in commercial quantities and lengths.

Other sizes of shutters on request

MODIFICATION DATE
01.2018

SHUTTERS TYPE 45/45 WOOD (CEDAR, SYBERIAN LARCH)



PRODUCT DATA SHEET FOR SHUTTERS TYPE 45/0 WOOD (CEDAR, SYBERIAN LARCH)

Profile pressed from aluminium alloy: grade 6060 or 6030 Condition T66 or T6

In accordance with PN-EN 755-9

Tolerance U.N.E. PN-EN 12020-2

Mechanical properties according to PN-EN 755-2

Chemical composition in accordance with the PN-EN 573-3 standard

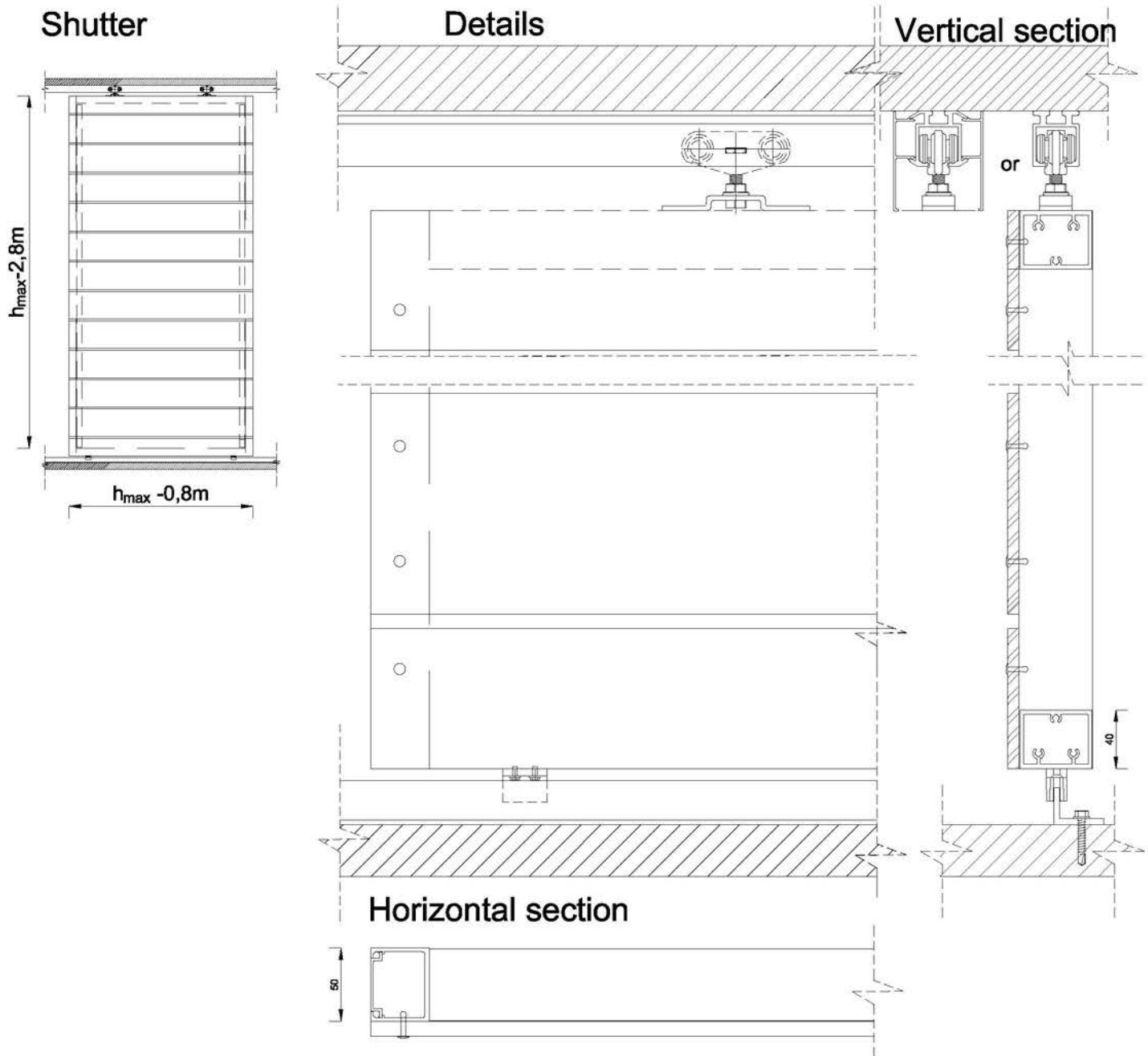
Surface quality: Polyester powder coating in all RAL colours 60-80 μm , wood effect, Anodising 15-20 μm , mill finish

Any components available in commercial quantities and lengths.

Other sizes of shutters on request

MODIFICATION DATE
01.2018

SHUTTERS TYPE HPL



PRODUCT DATA SHEET FOR SHUTTERS TYPE HPL

Profile pressed from aluminium alloy: grade 6060 or 6030 Condition T66 or T6

In accordance with PN-EN 755-9

Tolerance U.N.E. PN-EN 12020-2

Mechanical properties according to PN-EN 755-2

Chemical composition in accordance with the PN-EN 573-3 standard

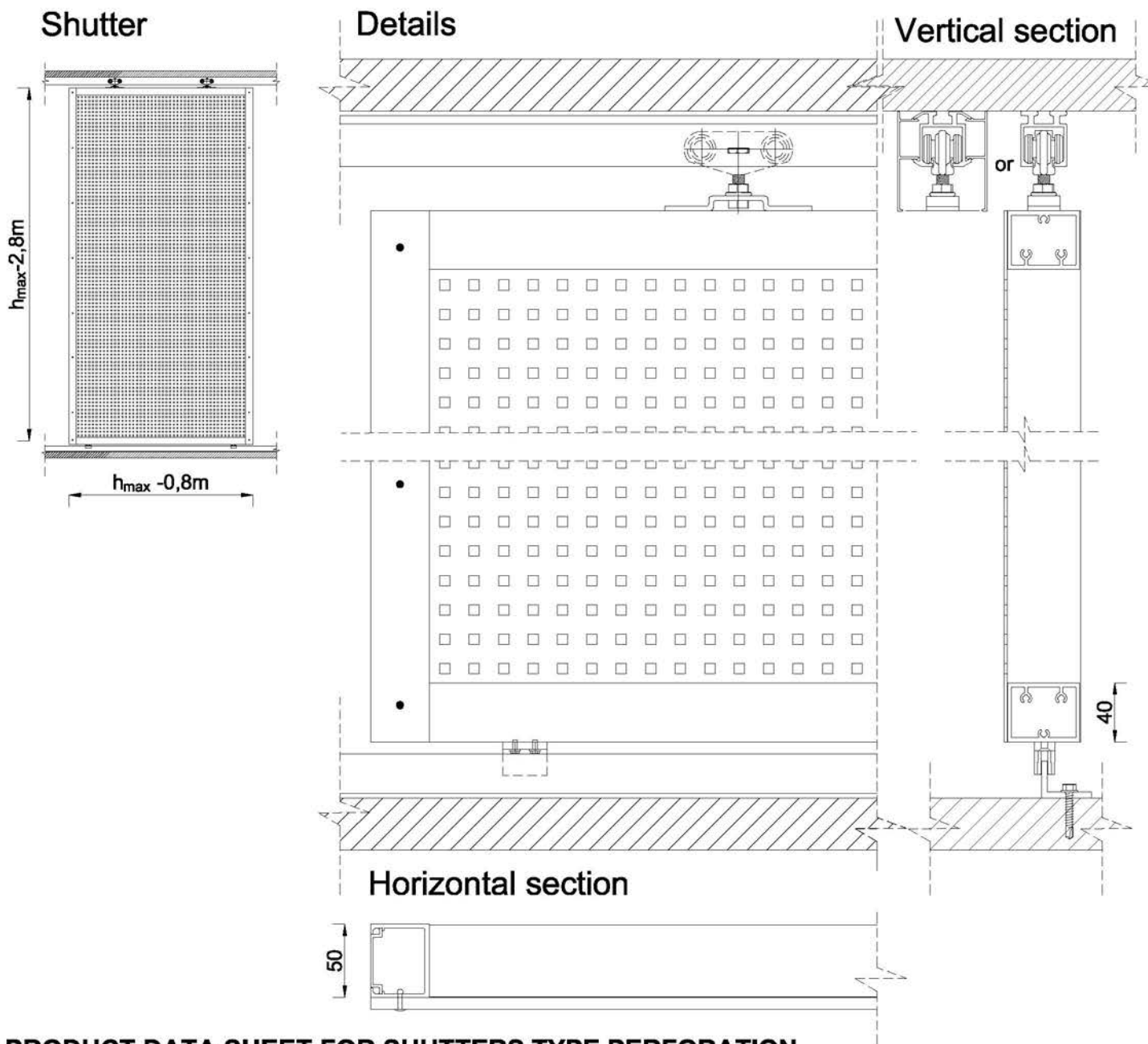
Surface quality: Polyester powder coating in all RAL colours 60-80 μm , wood effect, Anodising 15-20 μm , mill finish

Any components available in commercial quantities and lengths.

Other sizes of shutters on request

MODIFICATION DATE
01.2018

SHUTTERS TYPE PERFORATION



PRODUCT DATA SHEET FOR SHUTTERS TYPE PERFORATION

Profile pressed from aluminium alloy: grade 6060 or 6030 Condition T66 or T6

In accordance with PN-EN 755-9

Tolerance U.N.E. PN-EN 12020-2

Mechanical properties according to PN-EN 755-2

Chemical composition in accordance with the PN-EN 573-3 standard

Surface quality: Polyester powder coating in all RAL colours 60-80 μm , wood effect, Anodising 15-20 μm , mill finish

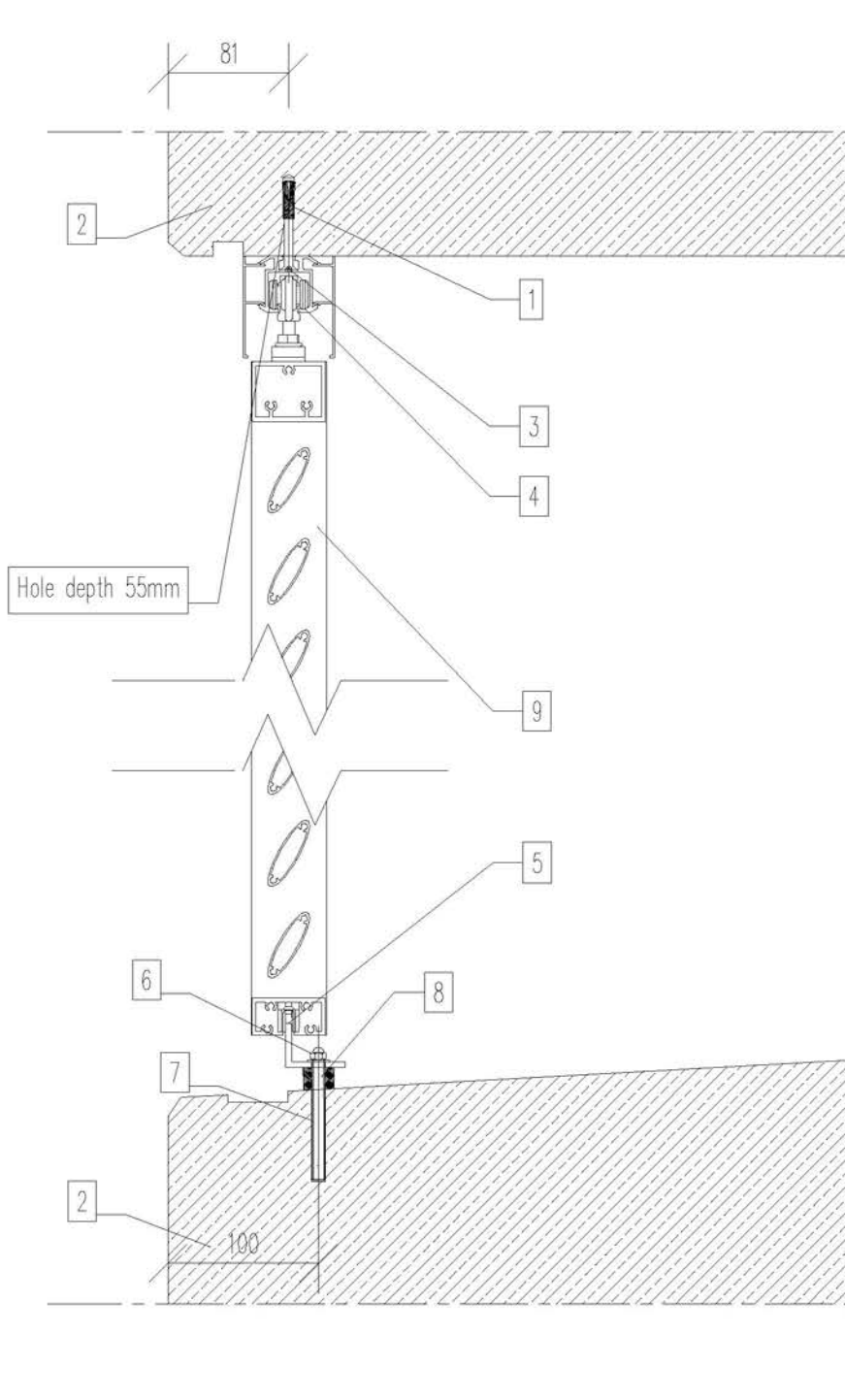
Any components available in commercial quantities and lengths.

Other sizes of shutters on request

MODIFICATION DATE
01.2018

1-segment sliding window shutters - fixing scheme

A



LEGEND:

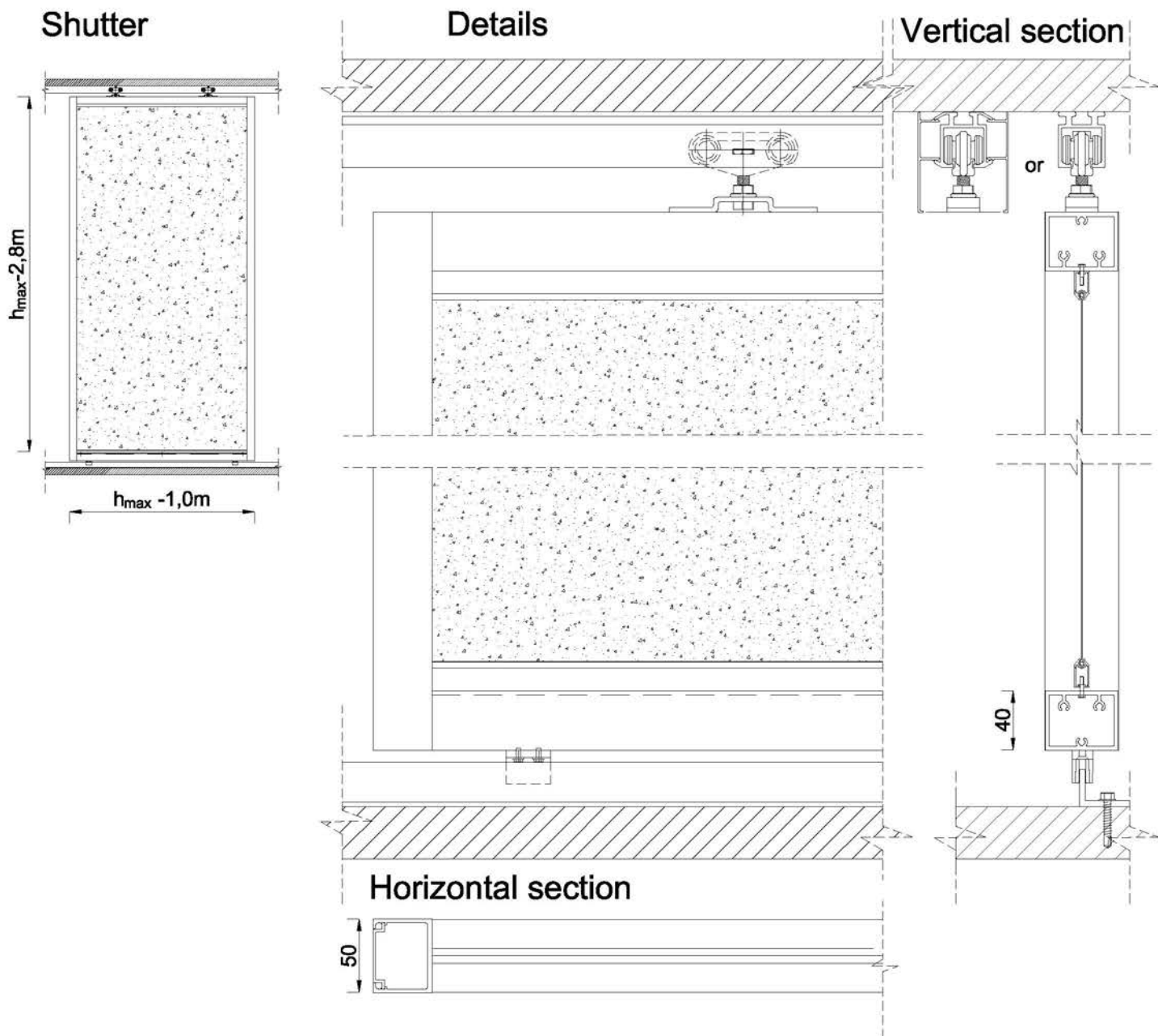
1. Brass sleeve M6x25
2. Existing reinforced concrete bolts.
3. M6x60 A2 countersunk head screw.
4. Upper guide
5. Bottom guide
6. M8 cap nut (M6)
7. M8x90 threaded rod (M6x90) A2 chemically anchored
8. EPDM spacer sleeve min. 70 * Sh dn = 8mm, d = 20mm
9. Sliding shutter segment

COMMENTS:

1. All dimensions and ordinates should be checked at the construction site, and the doubts should be explained with the designer. Check dimensions every time before ordering.
2. Consider the project together with other industry projects and executive drawings, and explain any doubts with the designer.
3. The boundary dimensions of the openings are given on the basis of the joinery specification of the architectural design of PW.

MODIFICATION DATE
02.2018

SHUTTERS TYPE SCREEN



PRODUCT DATA SHEET FOR SHUTTERS TYPE SCREEN

Profile pressed from aluminium alloy: grade 6060 or 6030 Condition T66 or T6

In accordance with PN-EN 755-9

Tolerance U.N.E. PN-EN 12020-2

Mechanical properties according to PN-EN 755-2

Chemical composition in accordance with the PN-EN 573-3 standard

Surface quality: Polyester powder coating in all RAL colours 60-80 μm , wood effect, Anodising 15-20 μm , mill finish

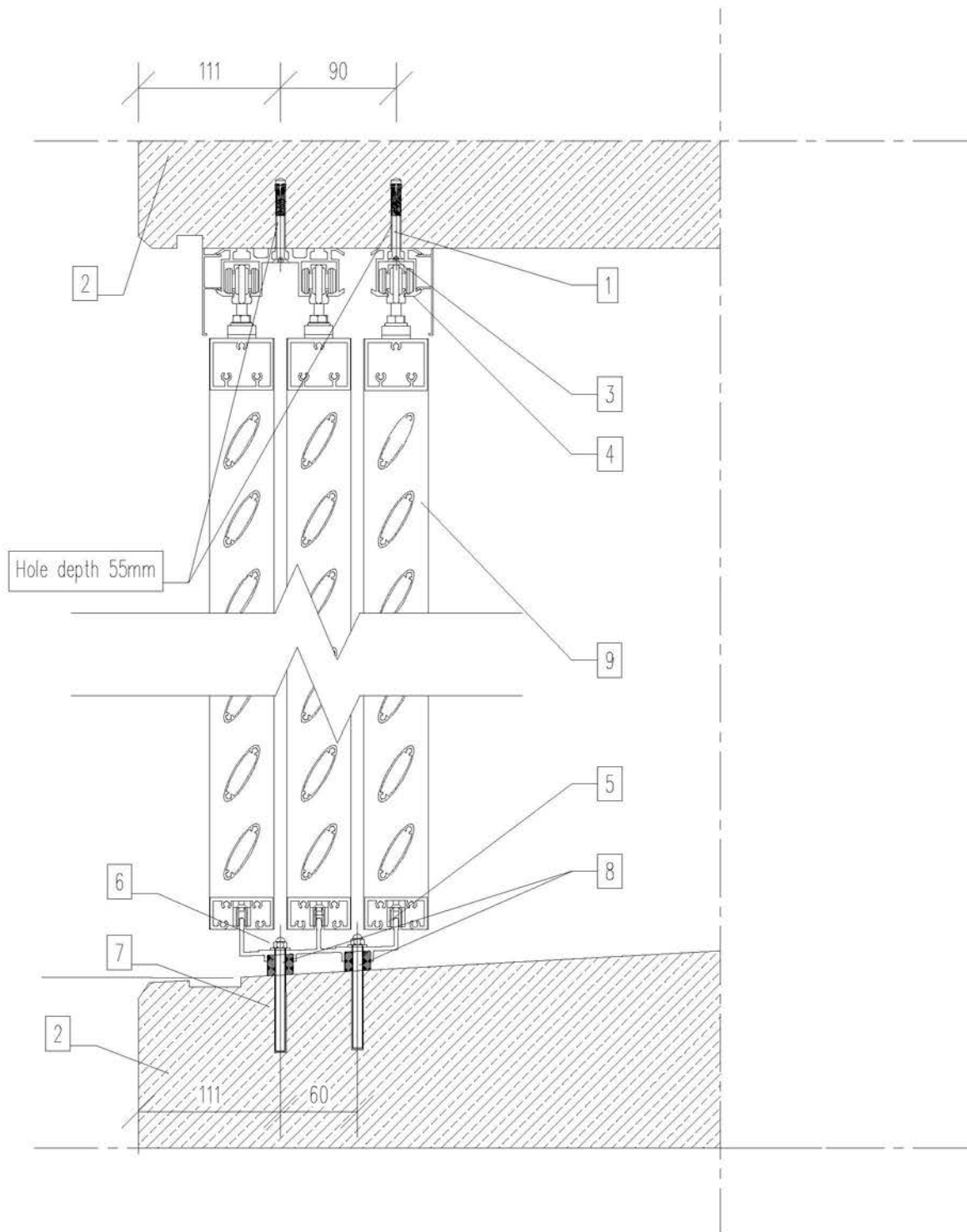
Any components available in commercial quantities and lengths.

Other sizes of shutters on request

MODIFICATION DATE
01.2018

Three-segment sliding window shutters - fixing scheme

Detail A



LEGEND I:

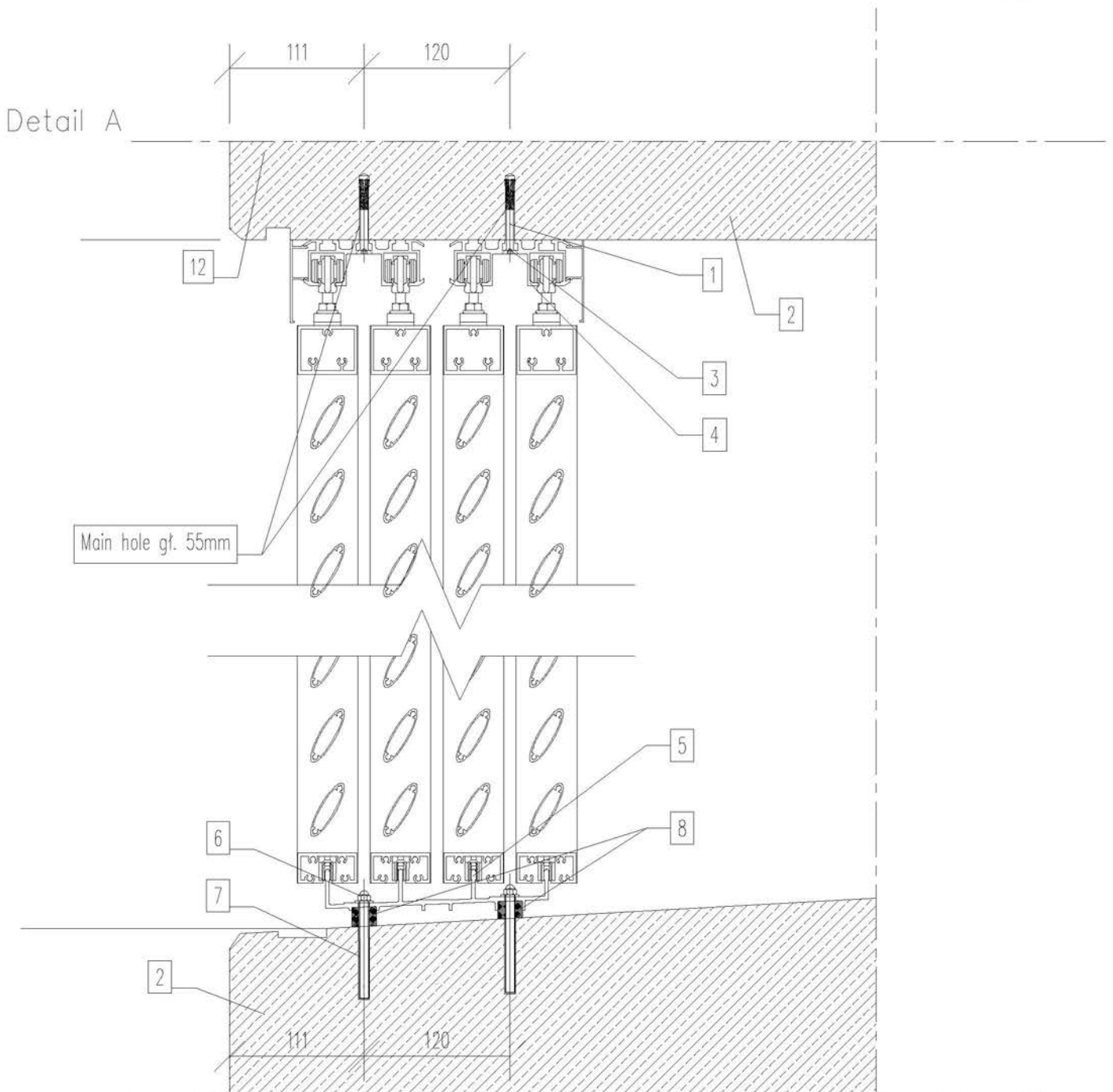
1. Brass sleeve M6x25
2. Existing reinforced concrete bolts.
3. M6x60 A2 countersunk head screw
4. Upper guide
5. Bottom guide
6. M8 cap nut (M6)
7. M8x90 threaded rod (M6x90) A2 chemically anchored
8. EPDM spacer sleeve min. 70 ° Sh dn = 8mm, d = 20mm
9. Sliding shutter segment

COMMENTS:

1. All dimensions and ordinates should be checked at the construction site, and the doubts should be explained with the designer. Check dimensions every time before ordering.
2. Consider the project together with other industry projects and executive drawings, and explain any doubts with the designer.
3. The boundary dimensions of the openings are given on the basis of the joinery specification of the architectural design of PW.

MODIFICATION DATE
02.2018

4-segment sliding window shutters - fixing scheme



LEGEND I:

1. Brass sleeve M6x25
2. Existing reinforced concrete bolts.
3. M6x60 A2 countersunk head screw
4. Upper guide
5. Bottom guide
6. M8 cap nut (M6)
7. M8x90 threaded rod (M6x90) A2 chemically anchored
8. EPDM spacer sleeve min. 70 * Sh dn = 8mm, d = 20mm
9. Sliding shutter segment
10. Existing reinforced concrete pillars

COMMENTS:

1. All dimensions and ordinates should be checked at the construction site, and the doubts should be explained with the designer. Check dimensions every time before ordering.
2. Consider the project together with other industry projects and executive drawings, and explain any doubts with the designer.
3. The boundary dimensions of the openings are given on the basis of the joinery specification of the architectural design of PW.

DATA MODYFIKACJI
02.2018

